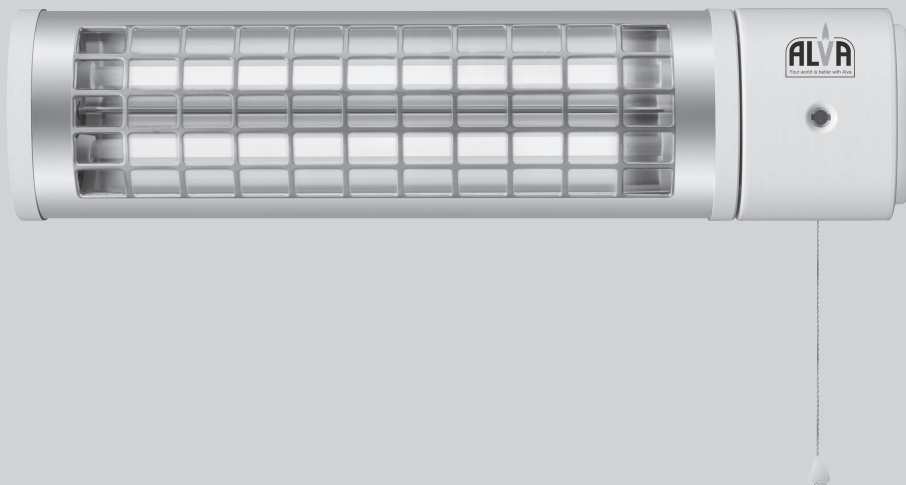


ALVA

ELECTRIC QUARTZ BATHROOM HEATER



Your world is better with Alva

PLEASE READ THESE INSTRUCTIONS CAREFULLY
BEFORE USING THIS APPLIANCE AND RETAIN THIS MANUAL
FOR FUTURE REFERENCE.

As with all electrical appliances, certain care is required for safe use.
This heater is designed to operate safely and provide user comfort.

Failure to read and understand these instructions is dangerous and
can lead to property damage, injury and even death.

This appliance must not be modified in any way - doing so is illegal and it will
make the appliance unsafe and cancel your warranty.

Manufactured for
and Distributed by:

ALVA

A division of Stingray Accessory Manufacturers (Pty) Ltd | P.O. Box 30014, Tokai, 7966
+27 21 442 1540 | info@stingray.co.za | www.alva.co.za
TOLL FREE NUMBER: 086 100 ALVA (2582)

 /Alvaelectricsa

IMPORTANT SAFETY INFORMATION

As with all appliances, misuse of this appliance or failure to fully follow these instructions may cause fire, injury or death. Please read all the instructions before using your heater. If you have any doubt or concerns about this appliance's installation, please consult a qualified electrician.

- Before using this appliance check that the voltage indicated on the type plate corresponds to your mains supply voltage.
- Ensure that the heater has been securely fastened to the mounting/installed securely. This heater can only be used in a fixed position.
- The distance of your appliance from the ceiling is a minimum of 35cm
- Please ensure that there is always a method for disconnection from the mains supply. Having a contact separation in all poles is required and must be incorporated in the fixed wiring, in accordance with the wiring rules. DO NOT use this heater with a programmer, timer or any other device that switches the heater on automatically. There is a fire risk if the heater is covered or positioned incorrectly.
- The protective grid does not give full protection for young children or infirm persons.
- Always disconnect the heater from the electricity mains when not in use, during installation, cleaning and/or heating element replacement.
- When replacing the heating element, always ensure it has been allowed to cool for at least 30 minutes.
- The heating element is sensitive. Do not handle it with bare hands. If it is inadvertently touched, always remove finger prints with a soft cloth and alcohol before use.
- Always ensure that the power cord is kept away from the body of the heater. The heater body will get very hot while in use and can melt the cable.
- Always inspect the power cord for signs of wear or damage. If wear or damage is noted, a suitably qualified person should replace it immediately. Failing to do so is a hazard and may lead to fire and/or electrocution/electric shock and/or property damage and/or death.
- NEVER allow the cord to come into contact with wet or hot surfaces or become twisted.
- DO NOT damage and DO NOT kink the power cord.
- DO NOT cover or obstruct the heater when in use.
- DO NOT insert any objects through any slot or opening in the heater.
- Users must not disassemble the heater, or change/substitute any parts of this heater; if the heater is faulty it is extremely dangerous to use it.
- Please take care to dispose of replaced heating element carefully. This can shatter and cause injury if not handled carefully. Keep away from children at all times.
- Keep the heater a distance of at least 1 meter from any combustible material, such as furniture, curtains, bedding, clothes or paper.
- Keep the heater clean. DO NOT allow objects to enter the ventilation, as this may cause electric shock, fire or damage the heater.
- The most common cause of overheating is deposits of dust or fluff in the appliance. Ensure these deposits are removed regularly by disconnecting the heater and vacuum cleaning air vents and grilles.
- NEVER touch the appliance with wet or damp hands or feet.
- NEVER expose the appliance to atmospheric conditions (rain, sun, etc)
- DO NOT use the appliance for anything other than its intended use.
- DO NOT use this heater in the immediate surroundings of a bath, a shower or a swimming pool.



Please read the instructions carefully before use.

Retain this manual for future reference.

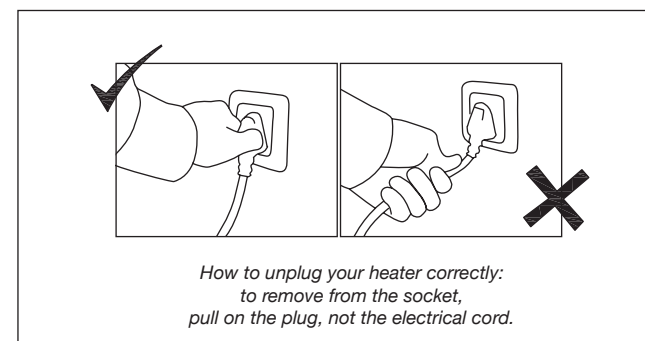
This appliance must not be modified in any way - doing so is illegal and will make the appliance unsafe as well as void your warranty.

- Any repairs that need to be done to the heater must be referred to an authorized service agent only.
- DO NOT connect the appliance to multiple extension cords or multiple outlets.
- This heater is not equipped with a device to control the room temperature. DO NOT use this heater in small rooms when they are occupied by persons not capable of leaving the room on their own, unless supervised.
- This heater must not be located immediately below a socket-outlet.

Ensure that children do not play with this heater.

This appliance is not intended or designed for use by persons (including children) with reduced physical, sensory or mental capabilities or lack of experience and knowledge, unless they are supervised or given instruction concerning use of this appliance by a person responsible for their safety.

If the power supply cord is damaged, it must be replaced with a special cord or assembly, available from the manufacturer or its service agent.



It is unsafe to position this heater where it is close to combustible materials.

Keep combustible materials such as furniture, paper, clothes and curtains at least 1m from the front, sides and rear of the heater.



INDEX

WARRANTY	2
GENERAL INFORMATION	2
PARTS DIAGRAM	3
ASSEMBLY	3-5
OPERATION	6
MAINTENANCE	7
TROUBLESHOOTING	8
TECHNICAL DATA	9
AFTER SALES SERVICE	9

KEY



Important information



Cautions and warnings.



Danger



*Contact an approved
ALVA technician.*



Do It Yourself

WARRANTY

PLEASE RETAIN YOUR PROOF OF PURCHASE FOR WARRANTY CLAIMS.

ALVA warrants this appliance to be free of defects in material and quality for a period of 12 months from date of original purchase. This warranty covers the intended use of this appliance – within a domestic setting and not for commercial or industrial purposes. Any damage caused by wilful abuse, tampering, modification or unauthorized repair will not be warranted.

Please retain all packaging material, as items returned without original packaging material may be subject to a withholding fee. Where this appliance is found to be defective, damaged, broken, or does not work correctly for the intended purpose, you must return the appliance to the retailer from where it was purchased. The warranty will only be effected with valid proof of purchase. Failure to provide the proof of purchase will most likely result in the repair or service required being chargeable.

If you have any questions while setting up or using this heater, please visit www.alva.co.za or call 086 100 ALVA (2582) or e-mail info@stingray.co.za

GENERAL INFORMATION

Before using this heater, please read through this manual and make sure you understand everything. If you are not sure, call **086 100 ALVA (2582)** or visit www.alva.co.za for help. This heater is a safe and efficient form of heating when used according to these instructions.

Reading and understanding this manual should give you a good indication of what to expect from your Alva heater. If this product is not what you want or need, please help Alva and the environment by not damaging or destroying any part of the packaging, the manual or the Styrofoam inserts.

Always keep your proof of purchase. Keep these instructions for future use. If you lose this copy, you can obtain a new copy from your dealer or online at www.alva.co.za.



ALVA

Thank you for your purchase of this heater. Please read these instructions carefully before use and keep them in a safe place, for future reference.



Not using appliances according to the instructions is extremely dangerous and can lead to property damage, injury or death.

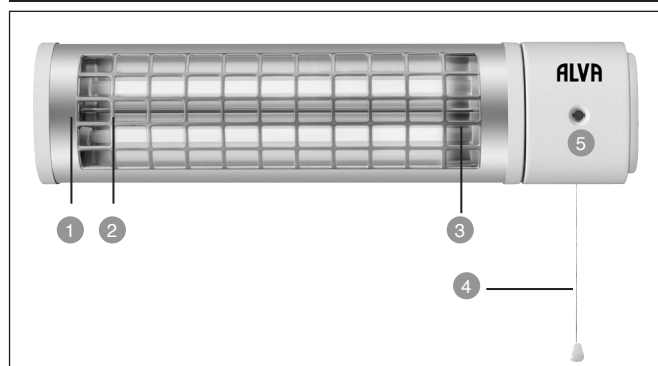
For indoor use only.

DO NOT use within 1m of any flammable surfaces.

DO NOT store flammable materials near the heater.



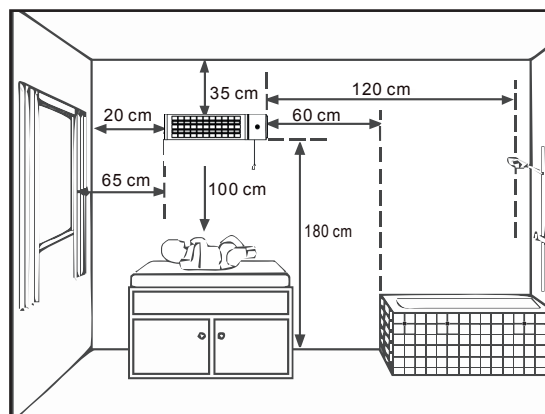
PARTS DIAGRAM



1	Aluminium housing
2	Heating tubes
3	Radiant heat panel
4	Pull cord switch
5	Heating level indicator

ASSEMBLY

WARNING: Ensure sufficient distance from the wall (min 20cm at the sides), ceiling (min 35cm), floor (min 1.8m), fixtures (min 1m) or other appliances (min 1m), to prevent damage or the risk of fire.

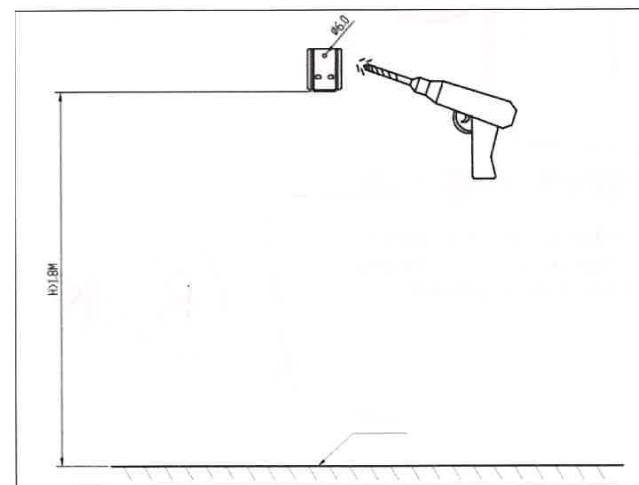


3

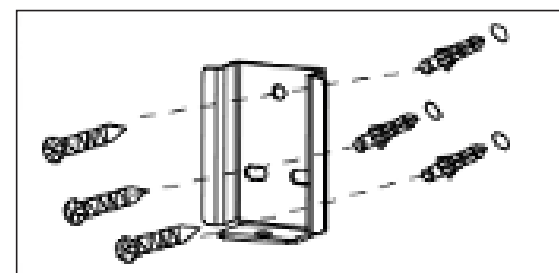


Always ensure that the heater is unplugged when not in use, installing and cleaning.

- Only use the fastening bracket for fixing the appliance to the wall, to ensure necessary distance from the rear wall.
- The appliance must never be placed immediately beneath a wall socket, as the heat it generates could damage the electrical installation



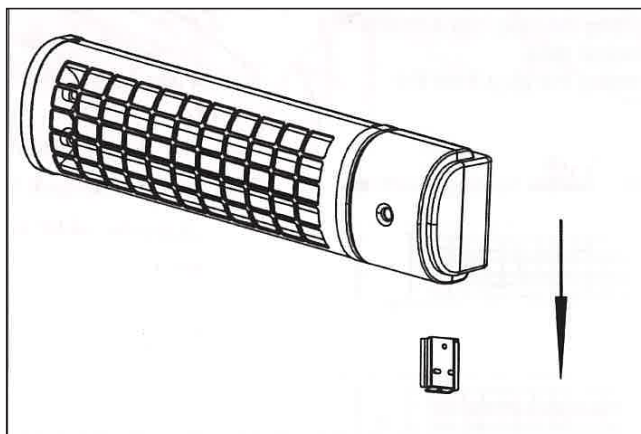
Drill 3 holes with diameter 6mm from the wall, to match the holes in the fastening bracket.



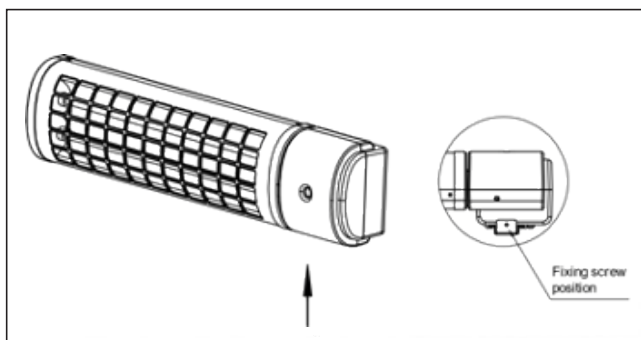
Clean the drill hole from the drilling dust because the wall plugs could otherwise jam, insert the wall plugs into the holes. Firmly screw in the fastening bracket.

Note: we recommend fastening the fastening bracket to a solid wall of masonry concrete.

4



Align the back card slot with the fastening bracket, and fix the product along the direction of the arrow.



Hang the device on the wall and tighten one ST3.9x12 screw on the bottom to fix the device totally.

OPERATION

1. Insert the plug into the wall socket and switch the wall socket on.
2. Switch the heater on by pulling on the switch cord.
3. The operating switch has 3 positions, two heating levels and off.

0	Appliance switched off	
1	Heating level 1 (600W)	
2	Heating level 2 (1200W)	

The angle of the heater can be adjusted downwards by up to 15 degrees by rotating the heat element head. Always ensure the heater is cool when making these adjustments.



MAINTENANCE

Be sure the heater is fault free:

1. Check the wiring is properly connected.
 2. Ensure that the wire is undamaged.
- Your heater should be checked once a year by a qualified wiring technician.
 - If faults are suspected or detected, stop using the heater and contact ALVA.
 - Clean the exterior of your heater when required to remove dust, using a damp cloth only.
 - DO NOT use abrasive products to clean the heater; these may damage the heater surface.
 - The heating element is sensitive - avoid handling it and always clean finger prints with alcohol before operating the heater.
3. Always disconnect the appliance and let it cool down completely before carrying out any maintenance.
 4. Use a vacuum cleaning to remove dust from the grille.
 5. Clean outside of the unit with a damp cloth and then dry it with a dry cloth. Never immerse the unit in water, nor let water drip into the unit.



TROUBLESHOOTING

SYMPTOM	CAUSE	SOLUTION
Heater will not turn ON	Not plugged in	Plug in and switch on socket.
	Heating element faulty	Replace heating element
	Not switched ON	SWITCH ON using switch cord.



TECHNICAL DATA

Item numbers	EIH600
Voltage (V) Hz	220-240V ~50/60Hz
Electric power	1200W max
Minimum distance from ceiling	0-35m
Minimum distance from side walls	1m
Insulation class	Class 1
Ingress protection	1Px4
Heating area	22-26m ²

AFTER SALES SERVICE

MANUFACTURED FOR AND DISTRIBUTED BY ALVA,
a division of Stingray Accessory Manufacturers (Pty) Ltd
P.O. Box 30014
Tokai, 7966
Tel: 021 442 1540
E-mail: info@stingray.co.za
www.alva.co.za
 www.facebook.com/Alvaelectricsa

TOLL FREE NUMBER **086 100 ALVA (2582)**