



Casa

CJGS20WH



ELECTRONIC BODY WEIGHT SCALE

PLEASE READ THIS MANUAL CAREFULLY
ALWAYS OPERATE THIS PRODUCT ACCORDING TO THE INSTRUCTIONS

CASA (A division of Stingray Accessory Manufacturers (Pty) Ltd.)
Cape Town, South Africa | Tel: +27 21 442 1540 | 086 100 2582
Fax: +27 21 448 8033 | Email: info@stingray.co.za | www.casahome.co.za
| www.facebook.com/stingraycasa

INDEX

GLOSSARY OF SYMBOLS FOUND IN THIS MANUAL

| | |
|---------------------------------|---|
| GENERAL | 2 |
| DESCRIPTION | 3 |
| HOW TO WEIGH YOURSELF CORRECTLY | 4 |
| OPERATING INSTRUCTIONS | 4 |
| BATTERY | 4 |
| MEASURING YOUR WEIGHT | 4 |
| AUTOMATIC SWITCH OFF | 5 |
| OVERLOAD INDICATOR | 5 |
| CARE | 6 |
| ADDITIONAL INFORMATION | 6 |
| SPECIFICATIONS | 6 |
| WARRANTY | 7 |



CAUTION



INFORMATION



DANGER

Dear Customer,

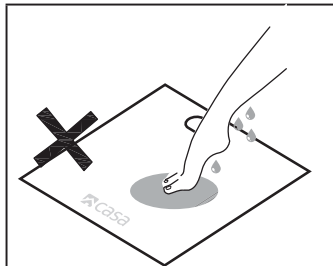
Thank you for purchasing this Casa product. You can rest assured that our scales have been designed to meet international standards and that you have purchased a quality product.

Please read these instructions carefully and keep them for future use.

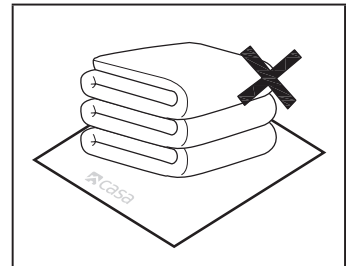
Be sure to share them with other users and always follow the information they contain.



GENERAL



DO NOT step on the scale with wet feet or when the scale surface is damp - there is a danger of slipping.



DO NOT place any objects on the scale when not in use.

- Protect the scale against impact, moisture, dust, chemicals, major temperature fluctuations and keep it away from heat sources.
- Repairs may only be done by Casa Customer Service or authorized dealers. Failure to follow this will void the warranty.
- This device is only for private use and is not intended for medical or commercial purposes.
- Please dispose of the appliance in accordance with the Directive on Waste Electrical and Electronic Equipment (*WEEE*). In case of queries, please contact the municipal authorities responsible for waste disposal in your area.



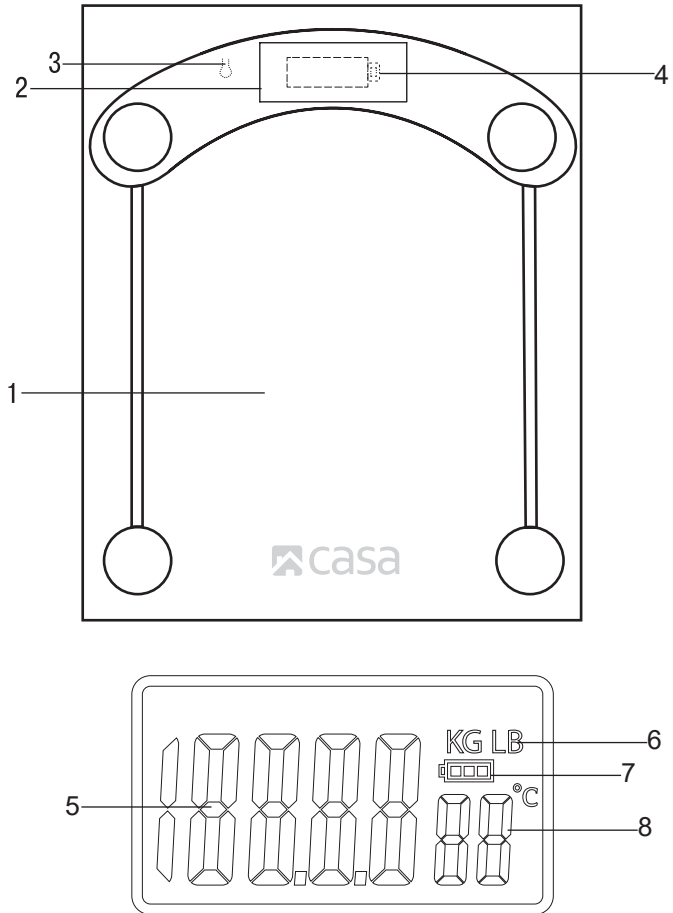
Keep packaging materials away from children as there is a risk of suffocation



Batteries are very dangerous if swallowed. Keep batteries and scale out of reach of small children. If batteries are swallowed, seek medical help immediately.



DESCRIPTION



DESCRIPTION

1. Weighing platform
2. Display
3. Weight measurement unit selection button
4. Battery compartment lid

Display

5. Weight measurement
6. Weight unit symbols (LB, KG)
7. Battery status
8. Room temperature (°C)

i

HOW TO WEIGH YOURSELF CORRECTLY

If possible, always weigh yourself at the same time of day (ideally in the morning), after going to the toilet, on an empty stomach and without clothes to achieve comparable results.

i

OPERATING INSTRUCTIONS

This scale has been designed to determine the weight of human beings. The scale can measure up to 180kg.

i

BATTERY

2 x AAA batteries (included)

If present, pull the battery insulating strip off the battery compartment cover or remove the batteries protective film and insert the batteries according to the polarity. If the scale fails to operate, remove the batteries completely and insert them correctly again.

The icon shows the letters "LO" inside a rectangular box, representing the battery-replacement indicator on the scale's display.

Battery replacing indicator: When the batteries need replacing, the "LO" message will appear on the display.

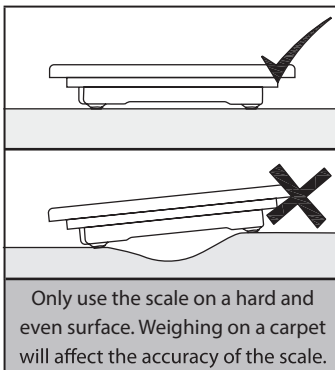
When the batteries need to be replaced, open the battery door located on the back of the scale. Remove the old batteries being careful not to bend the metal contacts. Dispose of or recycle the batteries appropriately.

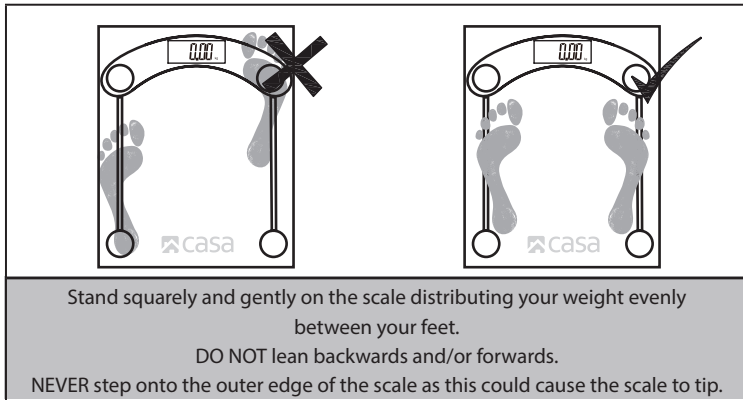
When replacing batteries, always replace both at the same time, not just one.

If you do not intend to use this scale for a long period of time, we recommend removing the batteries before storing the scale.

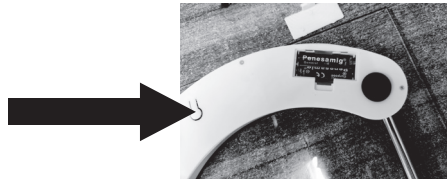
i

MEASURING YOUR WEIGHT





On the back of the scale is the selector switch for KG, OFF, LB. Make your selection before taking your weight.



The LCD display will illuminate and indicate 0.00"lb"or "kg" depending on your selection

Stand on the scale to activate it.

Wait while the scale measures your weight.

Your correct weight will then be displayed as follows on the LCD screen:



Your scale rounds up or down to the nearest 50g. If you weigh yourself twice and get two different readings, your weight is the average of the two.



AUTOMATIC SWITCH OFF

When you step off the scale, it will automatically switch off.

(If no weighing takes place while the zero is being displayed, the scale switches off automatically after approximately 10 seconds).



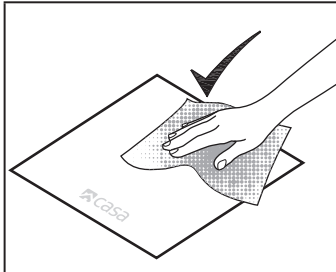
OVERLOAD INDICATOR



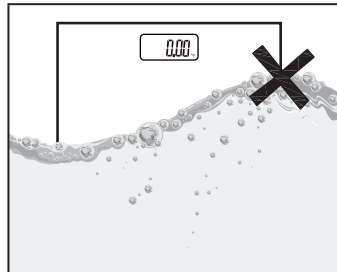
When the scale is overloaded (more than 396 lbs. /180 kg), the following will appear on the display "OL"

i

CARE



The scale should periodically be cleaned with a damp cloth and a small amount of soap.
DO NOT use strong or corrosive cleaning agents.



Never immerse the scale in water or rinse it under running water.



DO NOT store the scale in an upright position when not in use – this will drain the battery.



Treat your scale with care – it is a precision instrument. DO NOT drop it or jump on it.

i

ADDITIONAL INFORMATION

For the most consistent readings, always weigh yourself at the same time of day, without clothing or footwear, before meals and on the same floor surface.

i

SPECIFICATIONS

- Tempered Safety Glass Platform
- Maximum capacity: 180kg / 396lb
- Division 50g / 0.1lb
- LCD Display
- Step-on technology
- Automatic zero resetting
- Automatic switch off
- Overload indicator
- Low battery indicator
- Battery status indicator
- Room temperature display °C



WARRANTY

This scale is warranted to be free of defects in workmanship and materials for a period of 1 (one) year from date of purchase. Proof of purchase is required to validate claims, so please retain yours.

Before discarding packaging, please ascertain that this product is what is desired. Opening the packaging is considered acceptance that this product is suitable for use.

Always use scale on a hard, flat surface. Avoid using on a carpet or soft surface. This scale is for domestic use only (as described in this instruction manual). Any other use should be considered improper and dangerous. Packaging components (plastic bags, cardboard, polystyrene etc.) must be kept out of the reach of children as they are the potentially dangerous and their disposal should be carried out according to the current regulations.

CONTACT US

 **CASA**

A division of Stingray Accessory

Manufacturers (Pty) Ltd

P.O. Box 30014

Tokai

Cape Town

7966

Tel: 086 100 2582 or 021 442 1540

E-mail: customercare@stingray.co.za

www.casahome.co.za

 www.facebook.com/stingraycasa