

ALVA

OIL HEATER



AOH201-7 - 1500W
AOH201-11 - 2500W

AOH201-9 - 2000W
AOH201-13 - 2500W

Your world is better with Alva

PLEASE READ THESE INSTRUCTIONS CAREFULLY
BEFORE USING THIS APPLIANCE AND RETAIN THIS MANUAL
FOR FUTURE REFERENCE.

As with all electrical appliances, certain care is required for safe use.
This heater is designed to operate safely and provide user comfort.

Failure to read and understand these instructions is dangerous and
can lead to property damage, injury and even death.

This appliance must not be modified in any way - doing so is not legal and will
make the appliance unsafe as well as cancel your warranty.

Manufactured for
and distributed by:

ALVA

A division of Stingray Accessory Manufacturers (Pty) Ltd | P.O. Box 30014, Tokai, 7966 | +27 21 442 1540
info@stingray.co.za | www.alva.co.za | TOLL-FREE NUMBER: 086 100 ALVA (2582)

 /AlvaGas  /alvagas

IMPORTANT SAFETY INFORMATION

As with all appliances, misuse of this appliance or failure to fully follow these instructions may cause fire, injury or death. Please read all the instructions before using your heater.

- Before using this appliance check that the voltage indicated on the type plate corresponds to your mains supply voltage.
- DO NOT use this heater with a programmer, timer or any other device that switches the heater on automatically. There is a fire risk if the heater is covered or positioned incorrectly.
- Always disconnect the heater from the electricity mains when not in use, during assembly and cleaning.
- Always ensure that the power cord is kept away from the body of the heater. The heater body will get very hot while in use and can melt the cable.
- Always inspect the power cord for signs of wear or damage. If wear or damage is noted, a suitably qualified person should replace it immediately. Failing to do so is a hazard and may lead to fire and/or electrocution/electric shock and/or property damage and/or death.
- NEVER allow the cord to come into contact with wet or hot surfaces or become twisted.
- DO NOT damage and DO NOT kink the power cord.
- DO NOT cover or obstruct the heater when in use.
- DO NOT insert any objects through any slot or opening in the heater.
- Users must not disassemble the heater, or change/substitute any parts of this heater; if the heater is faulty it is extremely dangerous to use it.
- Keep the heater a distance of at least 1 meter from any combustible material, such as furniture, curtains, bedding, clothes or paper.
- Keep the heater clean. DO NOT allow objects to enter the ventilation, as this may cause electric shock, fire or damage the heater.
- NEVER touch the appliance with wet or damp hands or feet.
- NEVER expose the appliance to atmospheric conditions (rain, sun, etc)
- DO NOT use the appliance for anything other than its intended use.
- DO NOT use this heater in the immediate surroundings of a bath, a shower or a swimming pool.



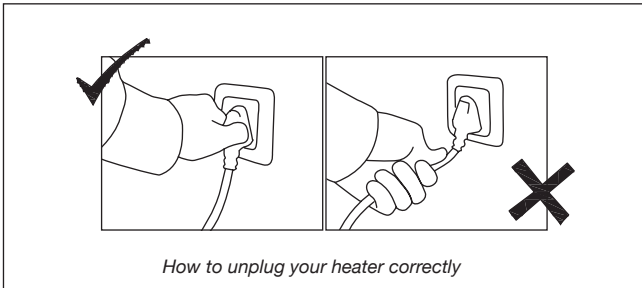
Please read the instructions carefully before use.

Retain this manual for future reference.

This appliance must not be modified in any way - doing so is illegal and will render the appliance unsafe as well as void your warranty.

- Any repairs that need to be done to the heater must be referred to an authorized service agent only.
- DO NOT connect the appliance to multiple extension cords or multiple outlets.
- This heater is not equipped with a device to control the room temperature. DO NOT use this heater in small rooms when they are occupied by persons not capable of leaving the room on their own, unless supervised.
- This heater must not be located immediately below a socket-outlet.
- Children should be supervised to ensure that they do not play with this heater
- Some parts of this product can become very hot and cause burns. Particular attention has to be given where children and vulnerable people are present.

Ensure that children do not play with this heater. This appliance is not intended or designed for use by persons (including children) with reduced physical, sensory or mental capabilities or lack of experience and knowledge, unless they are supervised or given instruction concerning use of this appliance by a person responsible for their safety. If the power supply cord is damaged, it must be replaced with a special cord or assembly, available from the manufacturer or its service agent.



It is unsafe to use this heater where it is close to a baffle plate or any other combustible material.

Keep combustible materials such as furniture, paper, clothes and curtains at least 1m from the front, sides and rear of the heater.

INDEX

WARRANTY	2
GENERAL INFORMATION	2
PARTS DIAGRAM	3
ASSEMBLY	3
USING YOUR HEATER	5
MAINTENANCE	6
TROUBLESHOOTING	6
TECHNICAL DATA	7
AFTER SALES SERVICE	7

KEY



Important information



Cautions and warnings.



Danger



*Contact an approved
ALVA technician.*



Do It Yourself

WARRANTY

PLEASE RETAIN YOUR PROOF OF PURCHASE FOR WARRANTY CLAIMS.

ALVA warrants this appliance to be free of defects in material and quality for a period of 12 months from date of original purchase. This warranty covers the intended use of this appliance – within a domestic setting and not for commercial or industrial purposes. Any damage caused by wilful abuse, tampering, modification or unauthorized repair will not be warranted.

Please retain all packaging material, as items returned without original packaging material may be subject to a withholding fee. Where this appliance is found to be defective, damaged, broken, or does not work correctly for the intended purpose, you must return the appliance to the retailer from where it was purchased. The warranty will only be effected with valid proof of purchase. Failure to provide the proof of purchase will most likely result in the repair or service required being chargeable.

If you have any questions while setting up or using this heater, please visit www.alva.co.za or call 086 100 ALVA (2582) or e-mail info@stingray.co.za

GENERAL INFORMATION

Before using this heater, please read through this manual and make sure you understand everything. If you are not sure, call **086 100 ALVA (2582)** or visit www.alva.co.za for help. This heater is a safe and efficient form of heating when used according to these instructions.

Reading and understanding this manual should give you a good indication of what to expect from your Alva heater. If this product is not what you want or need, please help Alva and the environment by not damaging or destroying any part of the packaging, the manual or the Styrofoam inserts.

Always keep your proof of purchase. Keep these instructions for future use. If you lose this copy, you can obtain a new copy from your dealer or online at www.alva.co.za.

ALVA

Thank you for your purchase of this heater. Please read these instructions carefully before use and keep them in a safe place, for future reference.



Not using appliances according to the instructions is extremely dangerous and can lead to property damage, injury or death.

For indoor use only.

DO NOT use within 1m of any flammable surfaces.

DO NOT store flammable materials near the heater.

PARTS DIAGRAM



1	Thermostat Knob
2	Power Switch
3	Cord Storage
4	Radiant Fins
5	Castor

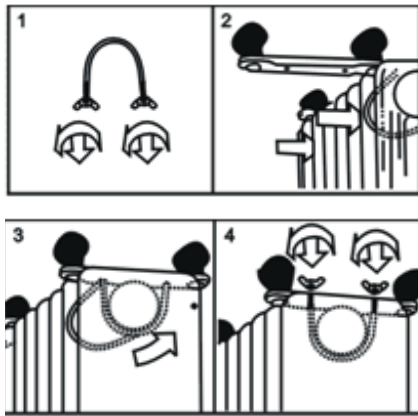
INSTALLATION

The heater is packaged with the castors unattached. You must attach them before operating the heater.

WARNING: Do not operate without the castors attached. Operate the heater in a upright position only (the castors on the bottom, controls at the top), any other position could create a hazardous situation.



Always ensure that the heater is unplugged when not in use, installing and cleaning.

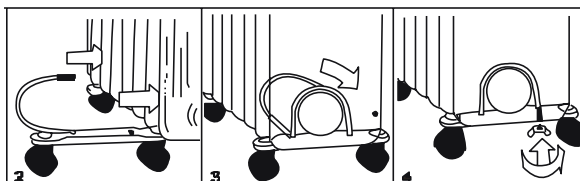


1. Place the radiator body upside-down on a scratch-free surface, make sure it is stable and will not fall.
2. Screw off the wing nuts from the U-shaped bolt provided, attach the U-shaped bolt to the U-facing flange between first and second fins (near the front cover).
3. To attach the castor mounting plate to the radiator body, you should insert the threaded ends of the U-bolt in the holes on the castor mounting plate.
4. Screw the wing nuts back to the U bolt and fasten the wing nut properly.

Note: do not over tighten, which may cause the damage to the radiator flange.

5. Screw off spherical nut from the castor, align the shaft to the hole of the castor mounting plate, insert, and screw on the spherical nut.
6. Repeat 2, 3, 4 and 5 on the rear of radiator for mounting of the rear castors.

Note: the rear castors must be mounted between the end two fins.



OPERATION OF THE HEATER

NOTE: It is normal when the heater is switched on for the first time or when it is turned on after having not been used for a long period of time, the heaters may emit some smell and fumes. This will disappear when the heater has been on for a short while.



Before using the heater, make sure you understand the "IMPORTANT SAFETY INFORMATION" section of this manual.

USING YOUR HEATER

1. Before using the heater, make sure that it is on a level and stable surface, to prevent damage or a hazardous situation.
2. Set all the controls to OFF position and insert the plug into a socket-outlet. Be sure that plug fits firmly.
3. Rotate the thermostat knob to the MAX position (*Fig 1*).
4. Switch on the Power Switch for the heater to start. The pilot light on the power switch will illuminate (*Fig 2*).
 - Switch I for low heat
 - Switch II for medium heat
 - Both switches for high heat III
5. When your room reaches the desired temperature, slowly rotate the thermostat knob counter clockwise until the pilot light goes out. The thermostat can now be left at this setting. As soon as the room temperature has dropped below the set temperature, the unit will switch itself on automatically until the set temperature has been reached again. In this way the room temperature remains constant with the most economical use of electricity.
6. If you want to change the room temperature setting, rotate the thermostat knob clockwise to raise the temperature, or counter clockwise to lower it.
7. This heater includes an overheat protection system that shuts off the heater when parts of the heater becomes excessively hot.
8. To completely shut the heater off, turn all the controls to OFF, and remove plug from the socket-outlet.



Fig. 1

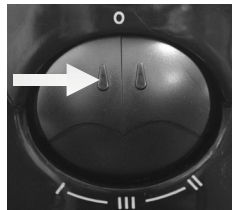


Fig. 2

OPERATION OF THE HEATER

NOTE: It is normal when the heaters are turned on for the first time, or when they are turned on after having not been used for a long period of time, the heaters may emit some smell and fumes. This will disappear when the heater has been on a short while.



Before using the heater, make sure you understand the "IMPORTANT SAFETY INFORMATION" section of this manual.

For your safety the heater will automatically switch off if it falls over or tilts past a certain angle. Should this occur, set the heater upright on a level, stable surface and it will automatically restart.

NOTE: ALVA does not recommend that the heater be left on, in any form, unattended

MAINTENANCE

It is necessary to periodically wipe the heater, depending on the placement and environment of its use.

Be sure the heater is fault free:

1. Always remove the plug from the socket-outlet and allow the heater to cool down before cleaning.
 2. Wipe heater with a soft damp (not wet) cloth.
 3. Ensure that the mains lead and plug are not damaged.
- Your heater should be checked once a year by a qualified technician.
 - If faults are suspected or detected, stop using the heater and contact ALVA.
 - Clean the exterior of your heater when required to remove dust.
 - DO NOT use abrasive products to clean the heater; these may damage the heater surface.
 - Always make sure the heater is OFF and cool before conducting any maintenance.
 - Keep young children or infirm persons away from any hot surfaces.
 - Always disconnect the heater from the electricity mains when not in use, during assembly and cleaning.
 - DO NOT submerge the heater in water.
 - DO NOT spray down or rinse the heater with water.


TROUBLESHOOTING

SYMPTOM	CAUSE	SOLUTION
Heater will not turn ON	Not plugged in	Plug in and switch on socket.
	Not switched ON	Rotate thermostat Switch on the Power switch
	Tilt switch has been activated	Stand the heater upright on a level surface

TECHNICAL DATA

Item numbers	AOH201-7 - 1500W AOH201-9 - 2000W AOH201-11 - 2500W AOH201-13 - 2500W
Voltage (V) Hz	220-240V~50/60Hz
Ingress protection	IPX0
Insulation protection	Class I
Heating area	AOH201-7 & AOH201-9 - 15m ² AOH201-11 & AOH201-13 - 20m ²

AFTER SALES SERVICE

MANUFACTURED FOR AND DISTRIBUTED BY
Alva, a division of Stingray Accessory Manufacturers (Pty) Ltd
P.O. Box 30014
Tokai, 7966
Tel: 021 442 1540
E-mail: info@stingray.co.za
www.alva.co.za
 www.facebook.com/AlvaGas

TOLL FREE NUMBER **086 100 ALVA (2582)**