

ALVA_{AIR}

INDUSTRIAL DESIGN WALL FAN

ACS604 50CM



- PLEASE READ THIS MANUAL CAREFULLY BEFORE USE AND ALWAYS OPERATE THIS PRODUCT ACCORDING TO THE INSTRUCTIONS.
- RETAIN THIS MANUAL FOR FUTURE REFERENCE.
- IT IS ILLEGAL AND DANGEROUS TO CHANGE OR MODIFY ANY PART OF THIS APPLIANCE.
- YOU MAY NOTICE POLISH MARKS ON THE BLADES. THIS IS NOT A DEFECT OR A SIGN OF POOR QUALITY, IT IS INTENTIONAL AND IS DONE TO BALANCE THE FANS BLADES AND REDUCE NOISE AND STRESS ON THE MOTOR.

Manufactured for
and distributed by:

ALVA_{AIR}

A division of Stingray Accessory Manufacturers (Pty) Ltd | P.O. Box 30014, Tokai, 7966
+27 21 442 1540 | info@stingray.co.za | www.alva.co.za
TOLL FREE NUMBER: 086 100 ALVA (2582)

IMPORTANT SAFETY INFORMATION

- Please read these instructions carefully before using your industrial design wall fan. The operator must understand all safety requirements as detailed in this manual before using the unit.
- The manufacturer's warranty may be voided by incorrect use of this product. If you have any queries regarding these instructions, contact your local dealer for clarification before using your industrial design wall fan.
- Always remove unit from all packaging materials prior to use.
- Failure to follow the manual's instructions could result in damage or serious injury.
- When using electrical appliances, in order to reduce the risk of fire, electric shock, and/or injury, these basic safety precautions should always be followed.
- This product is intended for indoor, general industrial and household use.
- Do not use the product for any other purpose.
- Do not place the product in or near an open window. Rain, snow, and other weather elements may create an electrical hazard.
- Keep the product out of the reach of children and pets. This product is not intended for use by children.
- Do not leave the product unattended while it is in use, especially when children are present. Always unplug the product from the electrical outlet when it is not in use.
- Make sure the wall mounting of this fan is stable and secure so it will not create an unsafe situation.
- Keep the power cord and product away from sharp edges and heated surfaces.
- Always unplug the product from the electrical outlet when cleaning it.
- Common cause of overheating is dust deposits, ensure fan is cleaned on a regular basis.
- Keep objects at least 1 metre away from front, sides and rear of fan.

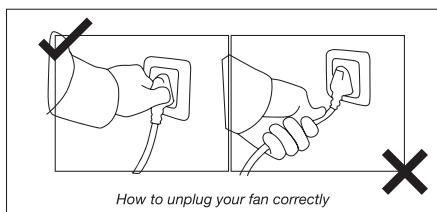
Thank you for your purchase of this industrial design wall fan. Please read these instructions carefully before use and keep them in a safe place, for future reference.



WARNING:
TO AVOID THE RISK OF ELECTRICAL SHOCK, ALWAYS MAKE SURE THE PRODUCT IS UNPLUGGED FROM THE ELECTRICAL OUTLET BEFORE ASSEMBLING, DISASSEMBLING, RELOCATING, SERVICING, OR CLEANING.

For indoor use only.

- Do not plug/unplug the product into/from the electrical outlet with a wet hand. Never insert fingers or any other object through the fan guards. Never drop or insert objects into any opening of the product.
- Do not attempt to open any part of the motor housing, as a risk of electrical shock may exist.
- Never operate the product without the fan guards in place, as serious personal injury may result. Plug the product into a standard outlet.
- Do not allow the power cord to hang (i.e., over the edge of a table or counter) where it may be tripped over or pulled.
- Ensure power cord is not pulled taught when fan oscillates from side to side.
- Do not operate product if the power cord is cut, damaged, or if the wires are exposed. Contact 086 100 ALVA (2582) or an Authorised Service agent to replace the power cord.
- Do not immerse or expose the motor housing, power cord, or plug to water or other liquids. Disconnect the plug (do not pull on the power cord) from the electrical outlet.
- Do not put any stress on the power cord where it connects to the product, as the power cord could fray and break.
- Do not operate the product if it has a damaged power cord or plug, malfunctions, is dropped, or damaged. This product has no user-serviceable parts.
- Do not attempt to examine or repair this product yourself. Qualified service personnel should perform any servicing.
- Do not use outdoors. This appliance is not intended for use by persons (including children) with reduced physical, sensory or mental capabilities or lack of experience and knowledge, unless they have been given supervision or instruction concerning use of the appliance by a person responsible for their safety.



To remove from the socket pull on the plug, not the electrical cord

WARRANTY

PLEASE RETAIN YOUR PROOF OF PURCHASE FOR WARRANTY CLAIMS.

ALVA warrants this appliance to be free of defects in material and quality for a period of 12 months from date of original purchase. This warranty covers the intended use of this appliance - including commercial or industrial use.

Any damage caused by willful abuse, tampering, modification or unauthorized repair will not be warranted.

Please retain all packaging material, as items returned without original packaging material may be subject to a withholding fee. Where this appliance is found to be defective, damaged, broken, or does not work correctly for the intended purpose, you must return the appliance to the retailer from where it was purchased.

The warranty will only be effected with valid proof of purchase. Failure to provide the proof of purchase will most likely result in the repair or service required being chargeable.

If you have any questions while setting up or using this Industrial Design Wall Fan, please visit www.alva.co.za, call 086 100 ALVA (2582) or e-mail info@stingray.co.za

GENERAL INFORMATION

Before using this fan, please read through this manual and make sure you understand everything. If you are not sure, call **086 100 ALVA (2582)** or visit www.alva.co.za for help.

Reading and understanding this manual should give you a good indication of what to expect from your industrial design wall fan.

Always keep your proof of purchase. Keep these instructions for future use.

If you lose this copy, you can obtain a new copy from your dealer or online at www.alva.co.za

INDEX

PARTS LIST	2
ASSEMBLY	3 - 5
OPERATING THE FAN	5 - 6
TILT ADJUSTMENT	5
SPEED FUNCTION	6
OSCILLATION FUNCTION	6
CLEANING AND MAINTENANCE	6 - 7
DISPOSAL	7
TROUBLE SHOOTING	8
SPECIFICATIONS	8
AFTER SALES SERVICE	8

KEY

Notes marked with the following :



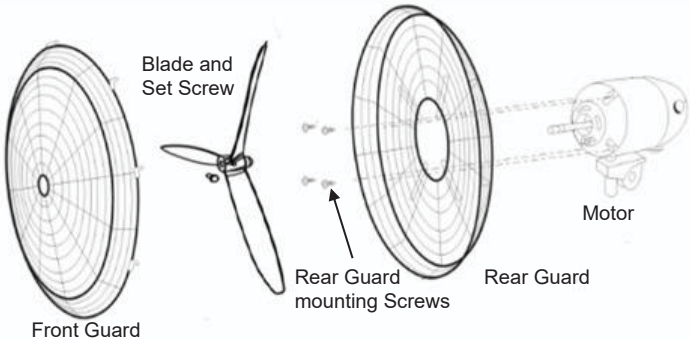
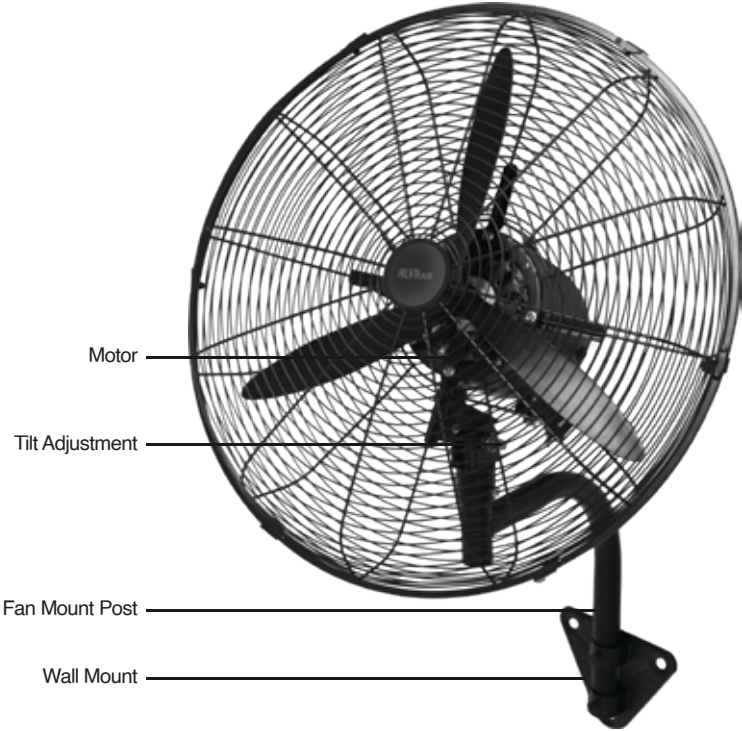
Contain important information .

Notes marked with the following :



Contain cautions and warnings.

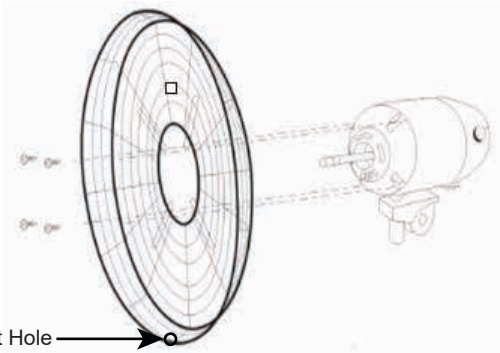
PARTS LIST



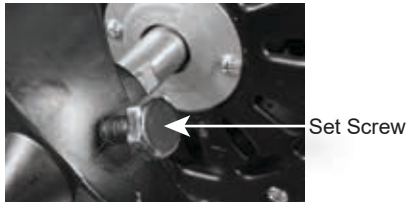
ASSEMBLY

There may be polish marks on the fan blades. This is not a defect or sign of poor quality, it is intentional and is done to balance the fan blades, to reduce noise and stress on the motor.

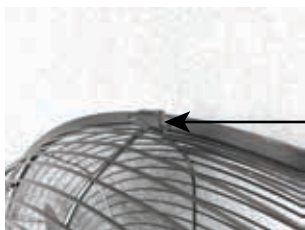
- Fit rear guard of fan onto motor and secure with 4 screws. Please ensure these screws are properly tightened to avoid vibration noise. Ensure bolt hole in outer rim is at the bottom.



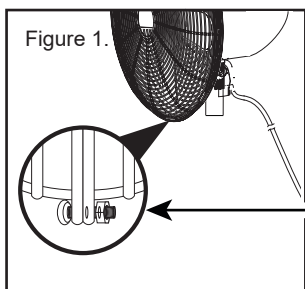
- Fit blade to shaft and Lock blade set screw by ensuring the screw seats onto the flat part of the shaft as shown below.



- Fit front guard to rear guard using clips. Hang Front Guard by its Hook over the top of Rear Guard. Ensure that clips on Front Guard are open to fit onto rear guard. Align the Locking Screw holes, which should be at the bottom and close clips. Secure the screw and nut by tightening up, see (Figure 1) on the next page.

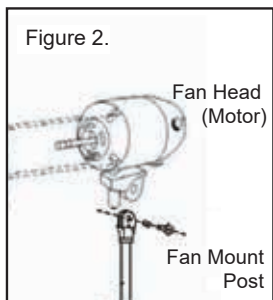


Front Guard Hook



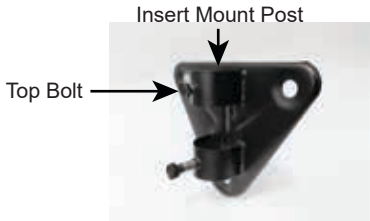
Front Guard
Locking Screw

- Install the Fan Head (Motor) on the female support of the Fan Mount Post using Locking Screw supplied (Figure 2).



Installation for wall fan The fan must be installed so that the blades are more than 2.1m above the floor.

- Drill 3x holes in wall and tightly secure wall mount base with sturdy wall bolts.
- Insert fan mount post into wall mount base in direction of arrow.
- Screw bottom bolt into wall mount base and through hole in fan mount post, secure tightly.
- Lock in position with top bolt in wall mount base.
- Install this way up.



OPERATING THE FAN

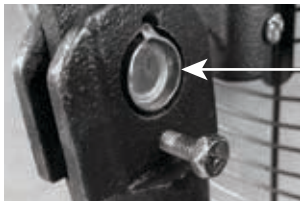
This fan is intended for indoor, general industrial or household use. Your industrial design wall fan is safe and easy to use.

Make sure the wall mounting of this fan is stable secure, so it will not create an unsafe environment.

Insert the plug in the wall socket, making sure the power cable is not taut when head oscillates from side to side and not in a walkway where it can be tripped over.

- **TILT ADJUSTMENT**

Adjust the tilt by loosening the locking screw.



Tilt Adjustment
Screw and Nut

- **SPEED FUNCTION**

This industrial design wall fan has 3 speeds for your comfort and convenience

- 1 - Low speed
- 2 - Medium speed
- 3 - High speed
- 0 - Off to stop the fan working



- **OSCILLATION**

Press red ON/OFF switch on the top of motor housing to make the fan head oscillate. To stop this, switch the ON/OFF switch OFF.



CLEANING AND MAINTENANCE

- The appliance, the power cord and the power plug must not be immersed in water or other liquids when you are cleaning them. Clean them with a dry cloth.
- If it is very dirty, the outside of the appliance can be wiped carefully with a moist cloth and then dried carefully. Make sure that no moisture penetrates into the interior of the appliance.
- Do not use any harsh cleaners, steel brushes, scouring powder or other hard objects to clean the appliance as these can cause scratches on the surfaces.
- To clean the fan blades, the front guard can be removed. The front guard must be placed back into place, and secured properly before using the fan.
- The fan can also be cleaned using the small bristle nozzle of a vacuum cleaner taking care not to damage the fan or blades.



Before cleaning the fan, always remove the plug from the power socket to prevent injury or electric shock.

- Clean the appliance regularly.
- Never use solvents, benzene or oil-based cleaners as this can damage the housing, fan guards and fan blades.
- Re-tighten visible screw connections on the appliance regularly in order to ensure that the device is functioning properly.
- Fit rear guard to motor body and fastened with mounting screws. Ensure it is properly tightened to avoid vibration.
- Fit blade to shaft and lock black set screw by ensuring the screw seats onto flat part of the shaft.
- Fit front guard, line up top to rear guard and push clips down to ensure a secure mount. Secure with screw and nut, and tighten with spanner.

DISPOSAL

Used electric appliances

1. If you do require to use your electrical appliance any longer, dispose of it at a recycling depot for used electric appliances.
2. Used electric devices must not be disposed of with normal household rubbish.

Further disposal instructions:

1. Return the electrical appliance in such a condition that its later re-use or recycling is not adversely affected.
2. If applicable, batteries must be removed in advance and the destruction of parts which contain fluids must be avoided.
3. Electrical appliances can contain harmful substances. Improper handling or damage to the appliance can lead to health problems or water or ground contamination, when the appliance is recycled later.



TROUBLE SHOOTING

If the fan does not operate	Confirm the fan's switch is not in the off position
	Check that the fan is plugged into the wall socket and the wall socket is switched on.

SPECIFICATIONS

Model	ACS604
Description	50cm Industrial Design Wall Mount Fan
Voltage	220-240V ~ 50Hz
Input Power	90W
Any modification to the industrial design wall fan may cause injury or property damage.	
Any modification to the industrial design wall fan will invalidate the warranty on this appliance.	

AFTER SALES SERVICE

MANUFACTURED FOR AND DISTRIBUTED BY
 Alva Air, a division of Stingray Accessory Manufacturers
 (Pty) Ltd.
 P.O. Box 30014
 Tokai, 7966
 Tel: 021 442 1540
 E-mail: info@stingray.co.za
www.alva.co.za
 www.facebook.com/AlvaGas
 TOLL FREE NUMBER
086 100 ALVA (2582)



Should you experience problems with this industrial design wall fan, carry out the necessary checks as per the Trouble Shooting Guide.

If you are still unable to correct the problem with the information in this guide, contact your nearest dealer or ALVA: 086 100 (ALVA) (2582) or e-mail info@stingray.co.za

