

ALVA_{AIR}

40cm MIST FAN

ACS305



- PLEASE READ THIS MANUAL CAREFULLY BEFORE USE AND ALWAYS OPERATE THIS PRODUCT ACCORDING TO THE INSTRUCTIONS.
- RETAIN THIS MANUAL FOR FUTURE REFERENCE.
- IT IS ILLEGAL AND DANGEROUS TO CHANGE OR MODIFY ANY PART OF THIS APPLIANCE.

Manufactured for
and distributed by:

ALVA_{AIR}

A division of Stingray Accessory Manufacturers (Pty) Ltd | P.O. Box 30014, Tokai, 7966
+27 21 442 1540 | info@stingray.co.za | www.alva.co.za
TOLL FREE NUMBER: 086 100 ALVA (2582)

IMPORTANT SAFETY INFORMATION

- Please read these instructions carefully before using your Mist Fan. The operator must understand all safety requirements as detailed in this manual before using the unit.
- The manufacturer's warranty may be voided by incorrect use of this product. If you have any queries regarding these instructions, contact your local dealer for clarification before using your Mist Fan.
- Always remove unit from all packaging materials prior to use.
- Failure to follow the manual's instructions could result in damage or serious injury.
- When using electrical appliances, in order to reduce the risk of fire, electric shock, and/or injury, these basic safety precautions should always be followed.
- This product is intended for general domestic use to cool rooms and is not intended for use in windows.
- Do not use the product for any other purpose.
- Keep the product out of the reach of children and pets. This product is not intended for use by children.
- Do not leave the product unattended while it is in use, especially when children are present. Always unplug the product from the electrical outlet when it is not in use.
- Always operate the product on a flat, level, steady and stable surface to avoid it overturning.
- Do not hang or wall-mount the product.
- Do not place the product in or near an open window. Rain, snow, and other weather elements may create an electrical hazard.
- Keep the power cord and product away from sharp edges and heated surfaces.
- Always unplug the product from the electrical outlet when cleaning and when filling the water tank.

Thank you for your purchase of this Mist Fan. Please read these instructions carefully before use and keep them in a safe place, for future reference.



WARNING:
TO AVOID THE RISK OF ELECTRICAL SHOCK, ALWAYS MAKE SURE THE PRODUCT IS UNPLUGGED FROM THE ELECTRICAL OUTLET BEFORE ASSEMBLING, DISASSEMBLING, RELOCATING, SERVICING, OR CLEANING.

For indoor use only.

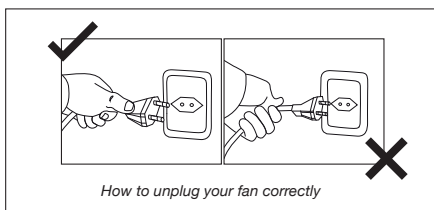


Assembly required

- Do not plug/unplug the product into/from the electrical outlet with a wet hand. Never insert fingers or any other object through the fan guards. Never drop or insert objects into any opening of the product.
- Do not attempt to open any part of the motor housing, as a risk of electrical shock may exist.
- Never operate the product without the fan guards in place, as serious personal injury may result. Plug the product into a standard outlet.
- Do not allow the power cord to hang (i.e., over the edge of a table or counter) where it may be tripped over or pulled.
- Do not operate product if the power cord is cut, damaged, or if the wires are exposed. Contact 086 100 ALVA (2582) or an Authorised Service agent to replace the power cord.
- Do not immerse or expose the motor housing, power cord, or plug into water or other liquids. Disconnect the plug (do not pull on the power cord) from the electrical outlet.
- Do not put any stress on the power cord where it connects to the product, as the power cord could fray and break.
- Do not operate the product if it has a damaged power cord or plug, malfunctions, is dropped, or damaged. This product has no user-serviceable parts.
- Do not attempt to examine or repair this product yourself. Qualified service personnel should perform any servicing. This product is intended for indoor, non-commercial, non-industrial, household use only.
- Do not use outdoors. This appliance is not intended for use by persons(including children) with reduced physical,sensory or mental capabilities or lack of experience and knowledge, unless they have been given supervision or instruction concerning use of the appliance by a person responsible for their safety.



Using the mist function of this product will result in an increase in humidity.



How to unplug your fan correctly

To remove from the socket pull on the plug, not the electrical cord

WARRANTY

PLEASE RETAIN YOUR PROOF OF PURCHASE FOR WARRANTY CLAIMS.

ALVA warrants this appliance to be free of defects in material and quality for a period of 12 months from date of original purchase. This warranty covers the intended use of this appliance – within a domestic setting and not for commercial or industrial purposes. Any damage caused by willful abuse, tampering, modification or unauthorized repair will not be warranted.

Please retain all packaging material, as items returned without original packaging material may be subject to a withholding fee. Where this appliance is found to be defective, damaged, broken, or does not work correctly for the intended purpose, you must return the appliance to the retailer from where it was purchased.

The warranty will only be effected with valid proof of purchase. Failure to provide the proof of purchase will most likely result in the repair or service required being chargeable.

If you have any questions while setting up or using this Mist Fan, please visit www.alva.co.za or call 086 100 ALVA (2582) or e-mail info@stingray.co.za

GENERAL INFORMATION

Before using this Mist Fan, please read through this manual and make sure you understand everything. If you are not sure, call **086 100 ALVA (2582)** or visit www.alva.co.za for help.

Reading and understanding this manual should give you a good indication of what to expect from your Mist Fan.

Always keep your proof of purchase. Keep these instructions for future use.

If you lose this copy, you can obtain a new copy from your dealer or online at www.alva.co.za.

INDEX

PARTS LIST	2
ASSEMBLING THE FAN	3-4
WATER TANK ASSEMBLY	4
HOW TO FILL WATER TANK	4
CONTROL PANEL	5-6
CLEANING AND MAINTENANCE	7
DISPOSAL	7
TROUBLE SHOOTING	8
SPECIFICATIONS	8
AFTER SALES SERVICE	9

KEY

Notes marked with the following;



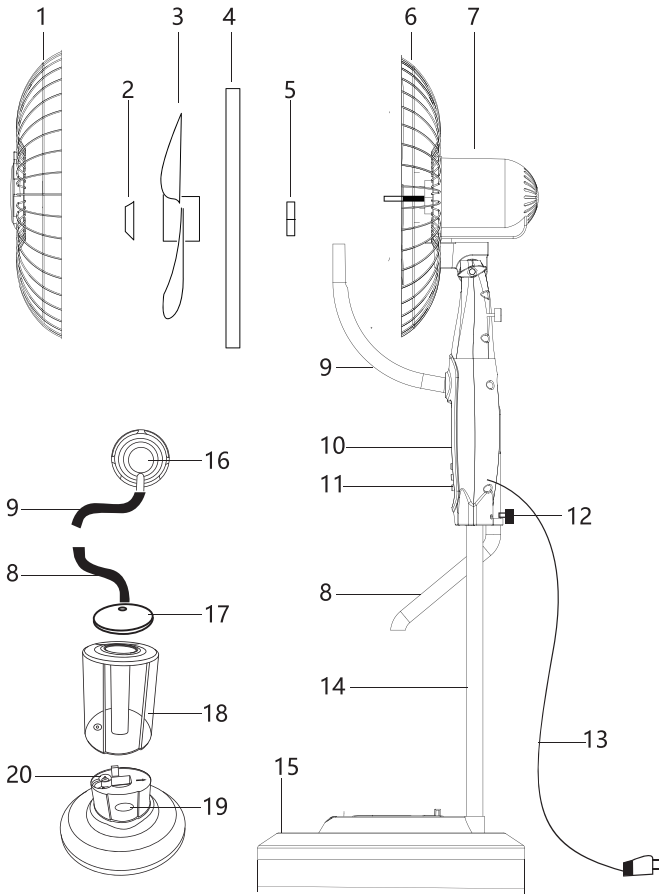
Contain important information.

Notes marked with the following;



Contain cautions and warnings.

PARTS LIST

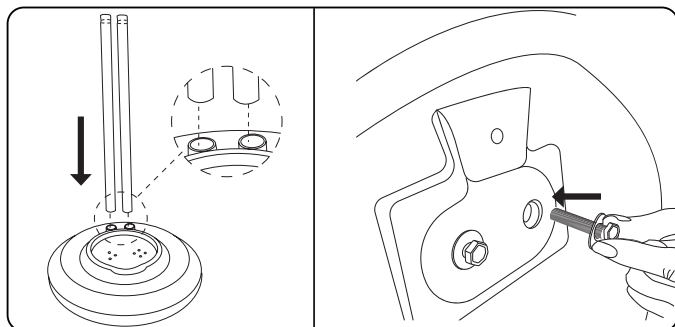


1.	Front grid
2.	Locking nut
3.	Blades
4.	Grid securing ring
5.	Plastic Nut
6.	Rear Grid
7.	Motor
8.	Lower flexible hose
9.	Upper flexible hose
10.	Function indicators

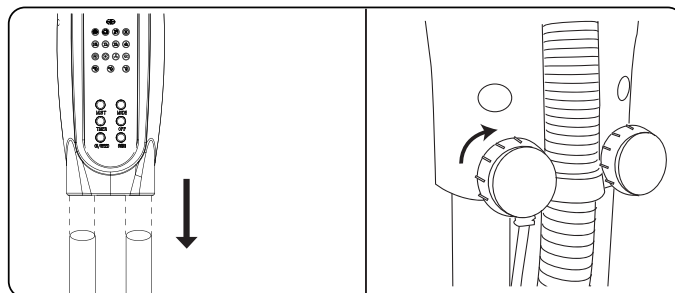
11.	Control buttons
12.	Bolts
13.	Power cord
14.	Supporting tubes
15.	Base and base cover
16.	Mist vent (front grid)
17.	Water tank cover
18.	Water tank
19.	Water tank indicator
20.	Mist generator

ASSEMBLING THE FAN

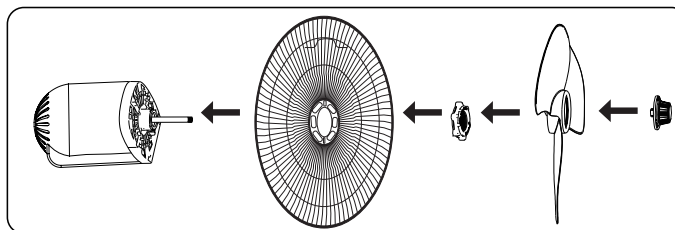
1. Align the two supporting tubes into the holes of the base, then fix in place from the bottom using the screws provided.



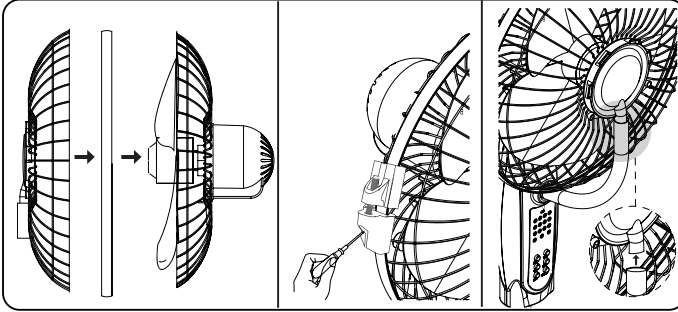
2. Loosen the two bolts located at the back of the motor unit (do not fully unscrew the two bolts or they will fall off). Fix the motor unit to the tubes and retighten the bolts.



3. Install the rear grid, plastic nut, blades, and blade locking nut to the motor shaft and fix in place.

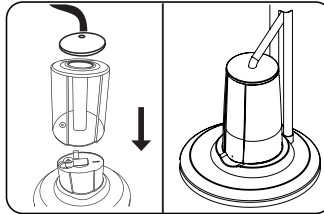


4. Install the front grid and grid securing ring, and secure using the screw on the securing ring frame. Insert the upper flexible hose from the motor unit into the mist vent that is located at the front of the fan grid (ensure the hose is free of kinks).



WATER TANK ASSEMBLY

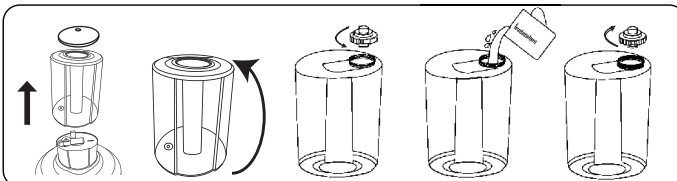
1. Place the mist generator on to the base, ensuring it is securely seated in the recess.
2. Place the water tank on top of the mist generator. Fit the cover to the top of the water tank.
3. Insert the lower flexible hose from the motor unit into the water tank cover (ensure the hose is free of kinks)



Make sure the fan is unplugged from the mains before filling or refilling the water tank.

HOW TO FILL WATER TANK

1. Unplug the appliance before filling and cleaning the water tank.
2. Remove the water tank and turn it upside down.
3. Twist the cap anticlockwise to unlock it.
4. Fill the tank with cold, clean water, making sure not to overfill it. Do not add any chemicals, oils, or other additives. Only use cold or warm water in the water tank. The water temperature must not exceed 40°C
5. Refit the cap and turn it clockwise to lock it in place.
6. Turn the tank over and place it back on the mist generator.

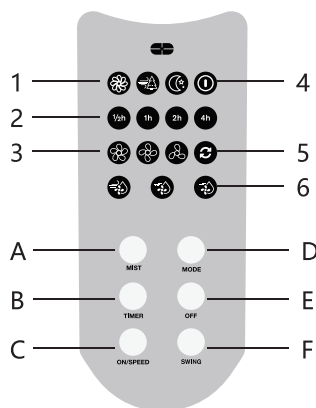


ONLY USE WATER IN THE WATER TANK. Do not use any chemicals, oils or other additives.



ONLY USE COLD OR LUKE WARM WATER IN THE WATER TANK. The water temperature must not be exceed 40°C.

CONTROL PANEL



Indicator Lights:

1. Mode:
Normal/Natural/Sleeping
2. Timer indicator:
0.5h/1h/2h/4h
3. Speed: High-Medium-Low
4. Power indicator
5. Swing indicator
6. Mist indicator:
Max.-Medium-Min.

These functions below can be operated either from the buttons on the fan control panel, or by using the remote control.

The remote control has a direct line of sight range of approximately 6m.

This product has both a mist and fan function which can be used together or separately.

The mist both cools and humidifies the air for more comfortable living conditions when very hot and the air is dry.

MIST BUTTON

- Press the “Mist” button to switch the ultrasonic mist on and off. Adjust the mist rate (Max-medium-minimum) by pressing the “Mist” button several times.
- When the mist function is selected, the water tank indicator light will be illuminated green.
- If the water tank is empty (or short of water), the water indicator light will be illuminated red.
- The mist function and fan function can be operated independently or together.

ON/SPEED BUTTON

- Use the “ON/SPEED” button to switch the fan ON.
- Set the fan speed from three options (High-Medium-Low) by pressing the “ON/SPEED” button several times.

OFF BUTTON

Press the “OFF” button to switch the fan off.

TIMER BUTTON FOR AUTO OFF FUNCTION

Press the “Timer” button when the fan is on. The indicator will show the time remaining until the fan is due to switch off. You can select the length of time the fan will be in operation from spans ranging from 0.5 to 7.5 hours in 0.5-hour increments. Press the TIMER button repeatedly, and the sum of the values of the lights is the remaining time until the mist fan will automatically switch off.



Please read these instructions carefully before use and keep them in a safe place for future reference.

MODE BUTTON

- The wind mode can be adjusted by pressing the “MODE” button.
- Normal: The fan will operate in High, Medium or Low mode as set.
- Natural: The fan will operate at low, medium and high speeds in different patterns to provide a wind flow that replicates natural airflow.
- Sleeping: Sleep mode can operate at low, medium and high speeds. In sleep mode, the wind speed will decrease in set patterns before operating at a low speed until shut down.

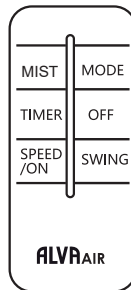
SWING BUTTON

- When you press the “SWING” button, the mist fan head will move continuously from side to side. Pressing the button again will stop the oscillation of the mist fan.
- You can adjust the fan head angle up and down manually.

No batteries supplied.

REMOTE CONTROL

The above functions can be controlled using the remote control by pressing the corresponding function buttons. To use the remote control, insert two AAA 1.5V batteries in the battery housing in the remote control.



*Replacement
Battery
AAA*

*Available from
www.stingray.co.za*

CLEANING AND MAINTENANCE

- Before cleaning the fan remove the plug from the power socket to prevent injury or electrical shock.
- Clean the water tank and water unit once a week to prevent the formation of scale, algae, or bacteria.
- If you do not intend to use the fan for an extended period, empty the water tank and dry the water unit with a microfiber cloth.
- If the fan is to be placed in storage for a more extended period of time (over winter, etc), always cover it with a suitable cover to prevent dust from entering the device.
- To avoid damaging the plastic and indicators, do not use any abrasive cleaning agents or chemicals.
- In general, the mist fan does not require any maintenance. The fan must not be opened by unauthorized persons. If there appears to be a problem that cannot be solved by following the troubleshooting advice provided below, please contact your dealer.

DISPOSAL

Used electric household devices

1. If you do not want to use your electrical appliance any longer, dispose of it at a recycling depot for used electric appliances.
2. Used electric devices must not be disposed of with normal household rubbish.

Further disposal instructions:

1. Return the electrical appliance in such a condition that its later re-use or recycling is not adversely affected.
2. Batteries must be removed in advance and the destruction of parts which contain fluids must be avoided.
3. Electrical appliances can contain harmful substances. Improper handling or damage to the appliance can lead to health problems or water or ground contamination, when the appliance is recycled later.

TROUBLE SHOOTING

If the Mist Fan will not operate	Confirm the Mist fan switch is not in the off position
	Check the Mist Fan is plugged into the wall socket and the wall socket is switched on.
Remote control not working	Make sure nothing is between you and the fan
	Hold remote control directly in front of fan
	Replace battery
No Mist	Check there is water in the water tank. Full water tank should last more than 8 hours.
	Water tank may be cracked
	Water could be contaminated with other substances or chemicals. Clean water tank and replace water.
Peculiar smell from mist	When new there may be residue in mist system. Smell should disappear after use.
	Water in tank could be contaminated. Clean water tank and replace water.

SPECIFICATIONS

Model	ACS305
Description	40cm Mist Fan
Voltage	220-240V~50Hz
Water Tank Capacity	3.2L
Max Mist Capacity	<250ml/hr
Input Power	75W
Any modification to the Mist Fan may cause injury or property damage.	
Any modification to the Mist Fan will invalidate the warranty of this appliance.	



Should you experience problems with this Mist Fan, carry out the necessary checks as per the Trouble Shooting Guide.

If you are still unable to correct the problem with the information in this guide, contact your nearest dealer or ALVA: 086 100 (ALVA) (2582) or e-mail info@stingray.co.za

AFTER SALES SERVICE

MANUFACTURED FOR AND DISTRIBUTED BY:

Alva Air, a division of Stingray Accessory Manufacturers
(Pty) Ltd.

P.O. Box 30014

Tokai, 7966

Tel: 021 442 1540

E-mail: info@stingray.co.za

www.alva.co.za

 www.facebook.com/AlvaGas

TOLL FREE NUMBER

086 100 ALVA (2582)