

ALVA

HUMIDIFIER

ACS302



PLEASE READ THESE INSTRUCTIONS CAREFULLY
BEFORE USING THIS APPLIANCE AND RETAIN THIS MANUAL
FOR FUTURE REFERENCE.

As with all electrical appliances, certain care is required for safe use.
This humidifier is designed to operate safely and provide user comfort.

Failure to read and understand these instructions is dangerous and
can lead to property damage, injury and even death.

This appliance must not be modified in any way - doing so is illegal and
it will render the appliance unsafe and void your warranty.

Manufactured for
and distributed by:

ALVA AIR
Life's Cool

A division of Stingray Accessory Manufacturers (Pty) Ltd | P.O. Box 30014, Tokai, 7966
+27 21 442 1540 | info@stingray.co.za | www.alva.co.za
TOLL FREE NUMBER: 086 100 ALVA (2582)

 /Alvagas

IMPORTANT SAFETY INFORMATION

- Please read these instructions carefully before using your humidifier. The operator must understand all safety requirements as detailed in this manual before using the unit.
- The manufacturer's warranty may be void by incorrect use of this product. If you have any queries regarding these instructions, contact your local dealer for clarification before using your humidifier.
- This product is for general domestic, indoor use only. Using for any other purpose will void the warranty.
- Keep the humidifier out of the reach of children and pets. This product is not intended for use by children.
- This appliance is not intended for use by persons (including children) with reduced physical, sensory or mental capabilities or lack of experience and knowledge, unless they have been given supervision or instruction concerning use of the appliance by a person responsible for their safety.
- Always operate the humidifier on a flat, level, stable, waterproof surface.
- DO NOT move the humidifier when switched on.
- Only use cold water, DO NOT use hot or warm water.
- DO NOT add essential oil when the humidifier is working.
- Only use plant essential oil, DO NOT use non-volatile mineral oil and viscous oil.
- If use of essential oils causes discomfort or reaction, stop using immediately and consult your doctor.
- DO NOT leave the humidifier running unattended indoors where the air could become saturated and lead to condensation on walls or furniture.

Thank you for your purchase of this ALVA Air HUMIDIFIER. You can rest assured that this product has been designed to meet international safety standards, and that you have purchased a quality product.



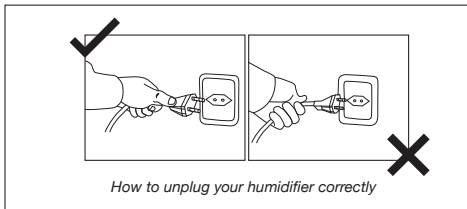
WARNING:
TO AVOID THE RISK OF ELECTRICAL SHOCK, ALWAYS MAKE SURE THE PRODUCT IS UNPLUGGED FROM THE ELECTRICAL OUTLET BEFORE ASSEMBLING, DISASSEMBLING, RELOCATING, SERVICING, OR CLEANING.

For indoor use only.



No assembly required

- DO NOT cover the lid of the humidifier when it is on to avoid accidents.
- Keep the power cord and product away from sharp edges, heated surfaces and areas where it can be stepped on.
- Do not operate the humidifier if the power cord is cut, damaged, or if the wires are exposed. Contact 086 100 ALVA (2582) or an Authorised Service Agent to replace the power cord.
- Use only a 230V ac outlet.
- Always unplug the humidifier from the electrical outlet when not in use and/or whenever it needs to be cleaned.
- Do not plug/unplug the humidifier from the electrical outlet with wet hands.
- Do not operate the humidifier if it has a damaged power cord, malfunctions, is dropped, or damaged. This product has no user-serviceable parts.
- Do not attempt to examine or repair this humidifier yourself. Qualified service personnel should perform any servicing.



How to unplug your humidifier correctly

To remove from the socket pull on the plug, not the electrical cord

WARRANTY

PLEASE RETAIN YOUR PROOF OF PURCHASE FOR WARRANTY CLAIMS.

ALVA warrants this appliance to be free of defects in material and quality for a period of 12 months from date of original purchase. This warranty covers the intended use of this appliance – within a domestic setting and not for commercial or industrial purposes. Any damage caused by willful abuse, tampering, modification or unauthorized repair will not be warranted.

Please retain all packaging material, as items returned without original packaging material may be subject to a withholding fee. Where this appliance is found to be defective, damaged, broken, or does not work correctly for the intended purpose, you must return the appliance to the retailer from where it was purchased.

The warranty will only be effected with valid proof of purchase. Failure to provide the proof of purchase will most likely result in the repair or service required being chargeable.

If you have any questions while setting up or using this humidifier, please visit www.alva.co.za or call 086 100 ALVA (2582) or e-mail info@stingray.co.za

GENERAL INFORMATION

Before using this humidifier, please read through this manual and make sure you understand everything. If you are not sure, call **086 100 ALVA (2582)** or visit www.alva.co.za for help.

Reading and understanding this manual should give you a good indication of what to expect from your humidifier.

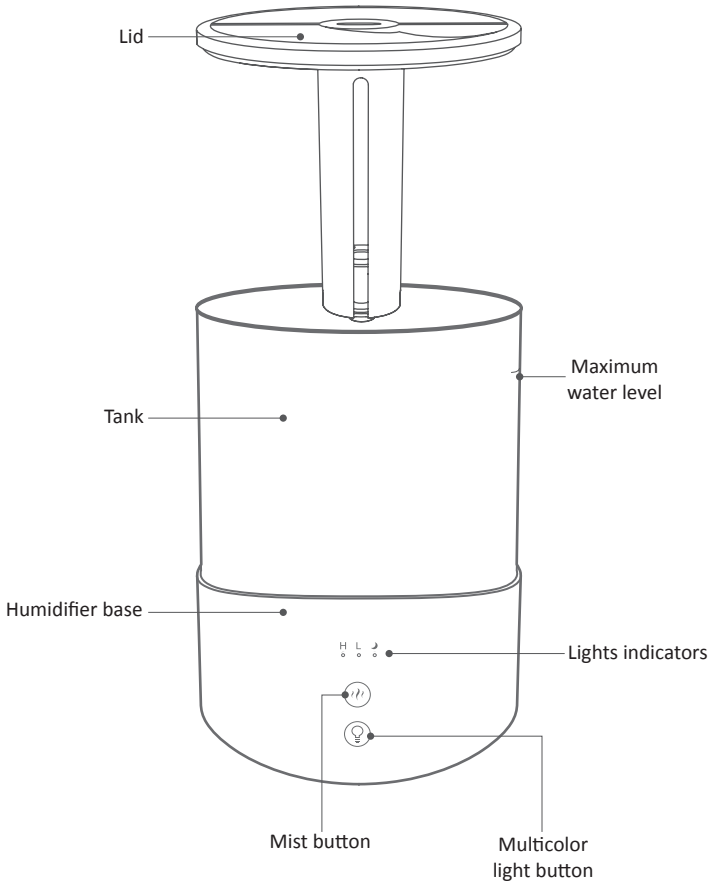
Always keep your proof of purchase. Keep these instructions for future use.

If you lose this copy, you can obtain a new copy from your dealer or online at www.alva.co.za

INDEX

PARTS LIST	2
OPERATING THE HUMIDIFIER	2
CARE	4
SPECIFICATIONS	4
TROUBLESHOOTING	5
CONTACT US	5

PARTS LIST



OPERATING THE HUMIDIFIER

This humidifier is for indoor domestic use only. The humidifier adds moisture and humidifies air in the room to create a more comfortable and pleasant environment. Dry air can cause your skin to crack.

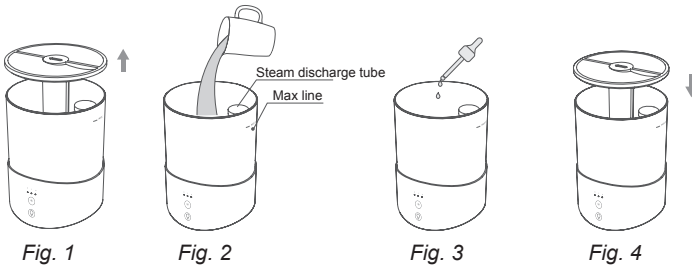
The humidifier can also be used with Essential Oils to create a relaxing body and mind aromatherapy experience.

BEFORE EACH USE

1. Place the humidifier on a raised, non-metallic, waterproof surface at least half a meter above the floor.
2. DO NOT place the device on a mat or towel. The blower fan is located at the bottom of the unit and the air holes must not be obstructed.
3. DO NOT place the humidifier on a wooden surface or near furniture that can be damaged by prolonged exposure to moisture.

FILLING WITH WATER

1. Remove the lid to access the tank by lifting it (Fig 1).
2. Fill the Tank to the maximum water level mark with cold water (Fig 2). If filling under a tap, HOLD THE HUMIDIFIER WITH TWO HANDS.
3. DO NOT fill with hot water. Use fresh tap water. Do not add any medication or salt.
4. For aromatherapy add 3-5 drops of essential oil into the water (Fig 3).
5. Never pour water or add essential oil into the steam discharge tube (Fig 2).
6. Close with the lid (Fig 4).
7. Plug the power cord into the wall socket and switch on.







MIST OPERATION

- 3 modes to diffuse mist – High, Low and Night.
1. Press Mist button (☹) once for High Mode.
The mist will be diffused at maximum delivery rate and “H” indicator light will illuminate.
 2. Press Mist button (☹) a second time for Low Mode.
The mist will be diffused at minimum delivery rate and “L” indicator light will illuminate.
 3. Press Mist button (☹) a third time for Night Mode.
The mist will be diffused at minimum delivery rate and the LED lights will switch off to avoid disturbing sleep. The “☾” indicator light will illuminate for a few seconds before switching off.
 4. Press Mist button a fourth time; the mist will stop.

When the water level is low, the humidifier automatically switches off for your peace of mind. The red light will flash 5 times as an indication.

LIGHT OPERATION

The light function will only operate after the mist function has been set.

1. Press Light button  once; the colour will automatically alternate through the 7 colours.
2. Press Light button  a second time; the chosen colour will stay illuminated.
3. Press Light button  a third time; reverts back to automatically alternating through the 7 colours.
4. Press and hold Light button  for 3 seconds to switch off the light.

Note:

Only use plant essential oil, DO NOT use non-volatile base mineral oil and viscous oil.

If use of essential oils causes discomfort or reaction, stop using immediately and consult your doctor.

ALVA AIR Essential Oils are available from leading retailers and from www.stingray.co.za

CARE

Never immerse the humidifier in water (this is an electrical appliance). Pour the water out of the tank every day and dry with a cloth or paper towel. For a more periodic deep clean, fill the tank with half a litre of lukewarm water. Add 2 tablespoons of white spirit vinegar and fit the lid. Shake and let stand for about 20-30 minutes, then drain the tank and rinse. Clean exterior of the Humidifier with a soft damp cloth and dry.

SPECIFICATIONS

Model	ACS302
Description	Humidifier
Voltage	100-240V ac
Power	25W
Water Capacity	2.5L ±5%
Mist Output	H (max.) 150±10%ml/hr L (min.) 100±10%ml/hr
Room Size	20 - 40m ²
Lighting	7 colours
Dimensions	Ø17cm x 25cm height



Before cleaning the appliance always disconnect the power plug from the receptacle.

TROUBLE SHOOTING

Below is a troubleshooting guide to assist you problem solving any issues you may have with the humidifier. Should these not solve the problem for you, DO NOT try and repair the product yourself, rather contact Stingray Customer Care on the details below. Alternatively visit our website, www.alva.co.za

Problems	Solutions
The humidifier has no power	<ul style="list-style-type: none"> •Make sure the humidifier is connected to the power outlet. •If the Indicator lights do not switch on, contact Stingray Customer Service.
The Indicator lights are on but there is no steam emission	<ul style="list-style-type: none"> •Verify that there is water inside the tank. •Make sure there are no objects obstructing the steam emission. •Make sure there are no objects blocking the fan. •Empty and rinse the water tank with cold water from the tap. •Verify the presence of any mineral deposits.
The humidifier gives off unpleasant odours.	<ul style="list-style-type: none"> •Clean with a solution of water and white spirit vinegar and rinse with clean water. •Remove the lid of the humidifier for a few minutes and then close again.
There is white powder on the edges of the humidifier	<ul style="list-style-type: none"> •Tap water may be too mineralised. Try using distilled/purified water.

CONTACT US

MANUFACTURED FOR AND DISTRIBUTED BY **ALVA**^{ALVA}_{Lites Cool}
 a division of Stingray Accessory Manufacturers (Pty) Ltd.
 P.O. Box 30014
 Tokai, 7966
 Tel: 021 442 1540
 E-mail: info@stingray.co.za
www.alva.co.za
 www.facebook.com/alvagas
TOLL FREE NUMBER
086 100 ALVA (2582)



Should you experience problems with this humidifier, carry out the necessary checks as per the Trouble Shooting Guide.

If you are still unable to correct the problem with the information in this guide, contact your nearest dealer or ALVA: 086 100 (ALVA) (2582) or e-mail info@stingray.co.za