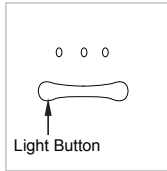


3. Press Light button a third time; switches light off.

Sleep Mode: after 1 or 2 above hold the Light button for a couple of seconds to active. The light is dimmed and the indicator lights switch off.



Note:

Only use plant based essential oil, DO NOT use non-volatile mineral oil and viscous oil.

If use of essential oils causes discomfort or reaction, stop using immediately and consult your doctor.

ALVA AIR Essential Oils are available from leading retailers and from www.stingray.co.za.

CARE

Never immerse the diffuser in water (this is an electrical appliance).

To clean, wipe the diffuser with a soft damp cloth and dry.

To prevent bacteria build-up, pour out the remainder of the water when you have finished using the diffuser.

DO NOT use detergent to clean the water tank. Use only white vinegar diluted with water to damp the cloth and wipe the water tank. DO NOT operate the diffuser with this cleaning solution.

Children should be supervised to ensure that they do not play with the appliance.

SPECIFICATION

Power Adapter Input	100-240Vac
Diffuser	24V DC
Power	12W
Water Capacity	200ml ±5%
Mist Output	20-25ml/hr
Room Size	15-20m ²
Timer Settings	2 or 4 hours
Lighting	7 colours
Dimensions	Ø15cm x 12.3cm height

WARRANTY

PLEASE RETAIN YOUR PROOF OF PURCHASE FOR WARRANTY CLAIMS.

ALVA warrants this appliance to be free of defects in material and quality for a period of 12 months from date of original purchase. This warranty covers the intended use of this appliance – within a domestic setting and not for commercial or industrial purposes. Any damage caused by wilful abuse, tampering, modification or unauthorized repair will not be warranted.

Please retain all packaging material, as items returned without original packaging material may be subject to a withholding fee.

Where this appliance is found to be defective, damaged, broken, or does not work correctly for the intended purpose, you must return the appliance to the retailer from where it was purchased.

The warranty will only be effected with valid proof of purchase. Failure to provide the proof of purchase will most likely result in the repair or service required being chargeable.

If you have any questions while setting up or using this Essential Oil Diffuser, please visit www.alva.co.za or call 086 100 ALVA (2582) or e-mail info@stingray.co.za

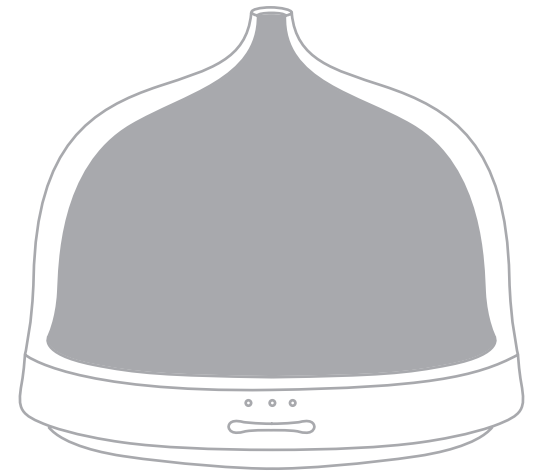
CONTACT DETAILS

Manufactured for and distributed by: **ALVA AIR** Life's Cool

A division of Stingray Accessory Manufacturers (Pty) Ltd
P.O. Box 30014, Tokai, 7966
+27 21 442 1540 | info@stingray.co.za | www.alva.co.za
TOLL FREE NUMBER: 086 100 ALVA (2582)

 www.facebook.com/alvagas

This is an AlvaAir product. This product is not available as a private label variant.



**ESSENTIAL OIL
DIFFUSER
ACS301**

Manufactured for and distributed by:



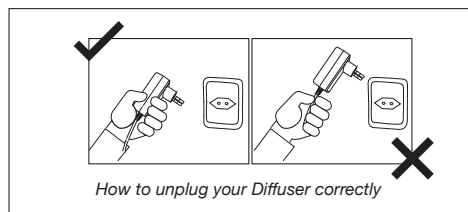
A division of Stingray Accessory Manufacturers (Pty) Ltd |
P.O. Box 30014, Tokai, 7966 | +27 21 442 1540 |
info@stingray.co.za | www.alva.co.za |
TOLL-FREE NUMBER: 086 100 ALVA (2582)

Thank you for your purchase of this AlvaAir Essential Oil Diffuser. You can rest assured that this product has been designed to meet international safety standards and that you have purchased a quality product.

IMPORTANT SAFETY INFORMATION

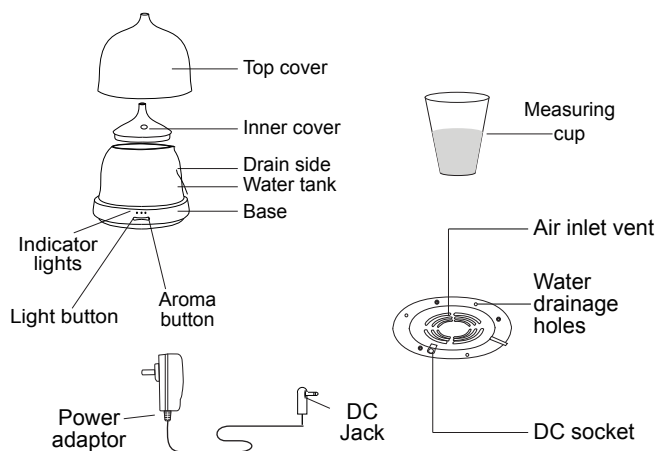
- Please read these instructions carefully before using your Essential Oil Diffuser. The operator must understand all safety requirements as detailed in this manual before using the unit.
- The manufacturer's warranty may be void by incorrect use of this product. If you have any queries regarding these instructions, contact your local dealer for clarification before using your Essential Oil Diffuser.
- This product is for general domestic, indoor use only. Using for any other purpose will void the warranty.
- Keep the Diffuser out of the reach of children and pets. This product is not intended for use by children.
- This appliance is not intended for use by persons (including children) with reduced physical, sensory or mental capabilities or lack of experience and knowledge, unless they have been given supervision or instruction concerning use of the appliance by a person responsible for their safety.
- Always operate the Diffuser on a flat, level, stable, waterproof surface.
- DO NOT move the Diffuser when switched on.
- Only fill with cold water, DO NOT use hot or warm water.
- DO NOT add essential oil when the Diffuser is working.
- Only use plant essential oil, DO NOT use non-volatile mineral oil and viscous oil.
- If use of essential oils causes discomfort or reaction, stop using immediately and consult your doctor.
- Keep the power cord and product away from sharp edges, heated surfaces and areas where it can be stepped on.
- Do not operate the Diffuser if the power cord is cut, damaged, or if the wires are exposed. Contact 086 100 ALVA (2582) or an Authorised Service Agent to replace the power cord/adaptor unit.
- Only use the power adaptor supplied with the product. Using any Power Adaptor other than the one supplied in the box will void the warranty and may damage the Diffuser.
- Always unplug the Diffuser from the electrical outlet when cleaning/filling it.
- Do not plug/unplug the Diffuser from the electrical outlet with wet hands.

- Do not operate the Diffuser if it has a damaged power cord or Power Adaptor, malfunctions, is dropped, or damaged. This product has no user-serviceable parts.
- Do not attempt to examine or repair this Diffuser yourself. Qualified service personnel should perform any servicing.



How to unplug your Diffuser correctly
To remove from the socket pull on the plastic power adaptor, not the electrical cord

PRODUCT STRUCTURE



OPERATING THE DIFFUSER

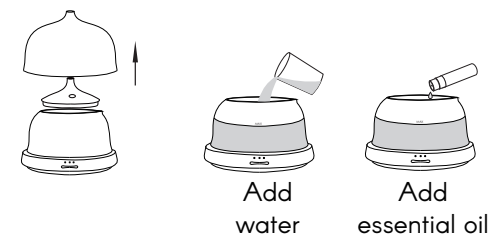
This Essential Oil Diffuser is for indoor domestic use only. When using with essential oils, the diffuser creates a relaxing mind and body aromatherapy experience.

The diffuser can be used without essential oils to humidify/add moisture to the air. Dry air can cause your skin to crack.

Filling with water

No filters required, works best with cold water. DO NOT fill with hot or warm water.

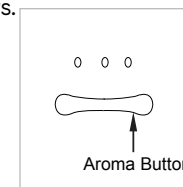
- For best performance use cold distilled water
1. Place the Diffuser on a flat level surface and ensure it is stable.
 2. Insert the DC jack of the adaptor into the Diffuser DC socket.
 3. Remove the cover and using the measuring cup, fill the water tank to the max mark on the inner tank, 200ml
 4. Add 2-4 drops of Essential Oil into the water.
 5. Close with the inner cover and then the top cover.
 6. Plug the adaptor into the wall socket and switch on.



Mist and light functions can be used together or independently of each other.

Mist Operation

- 3 modes to diffuse mist – continuously, 2 hours or 4 hours
1. Press Aroma button once; the mist will run continuously.
 2. Press Aroma button a second time; the Diffuser will automatically switch off after 2 hours.
 3. Press Aroma button a third time; the Diffuser will automatically switch off after 4 hours.
 4. Press Aroma button a fourth time; the mist will stop.



When the water level is low, the Diffuser automatically switches off for your peace of mind.

Light Operation

1. Press Light button once; the colour will automatically alternate through the 7 colours.
2. Press Light button a second time; the chosen colour will stay illuminated.