

ALVA_{AIR}

**8L EVAPORATIVE AIR COOLER
WITH REMOTE CONTROL AND TIMER**

ACS107




- PLEASE READ THIS MANUAL CAREFULLY BEFORE USE AND ALWAYS OPERATE THIS PRODUCT ACCORDING TO THE INSTRUCTIONS
- RETAIN THIS MANUAL FOR FUTURE REFERENCE
- IT IS ILLEGAL AND DANGEROUS TO CHANGE OR MODIFY ANY PART OF THIS APPLIANCE

Manufactured for
and Distributed by:

ALVA_{AIR}

A division of Stingray Accessory Manufacturers (Pty) Ltd | P.O. Box 30014, Tokai, 7966
+27 21 442 1540 | info@stingray.co.za | www.alva.co.za
TOLL FREE NUMBER: 086 100 ALVA (2582)

 /Alvagas

 /alvagas

IMPORTANT SAFETY INFORMATION

- Please read these instructions carefully before using your Air Cooler. The operator must understand all safety requirements as detailed in this manual before using the unit.
- The manufacturer's warranty may be voided by incorrect use of this product. If you have any queries regarding these instructions, contact your local dealer for clarification before using your Air Cooler.
- If you have any queries regarding these instructions, contact your local dealer for clarification before using your Air Cooler.
- Always remove unit from all packaging materials prior to use.
- Failure to follow the manual's instructions could result in damage or serious injury.
- When using electrical appliances, in order to reduce the risk of fire, electric shock, and/or injury, these basic safety precautions should always be followed.
- This product is intended for general domestic indoor use only to cool rooms.
- Do not use the product for any other purpose.
- Do not leave the product unattended while it is in use, especially when children are present. Always unplug the product from the electrical outlet when it is not in use.

Make sure your electricity supply is 220-240V~50Hz.
Use the appliance only as described in the manual. Other uses are not recommended as it may cause fire or electric shock.

Do not use the unit in areas where extreme temperatures occur.
Do not expose the unit to direct sunlight.
Do not fill the water tank above the "Max" indicator level.
To avoid spillage, do not move the air cooler quickly if the water tank still contains water.
Do not place the unit near any explosives, heated or hot surfaces.

Hold the plug to disconnect from the power socket.
Do not pull the power cord only.
Do not use the "Cooler" function in an enclosed area with poor ventilation for extended periods to avoid high humidity.

The unit must be operated on a flat, sturdy hard surface/floor.
Close supervision is required when the appliance is used by or near children.

Change the water regularly to keep the water clean.

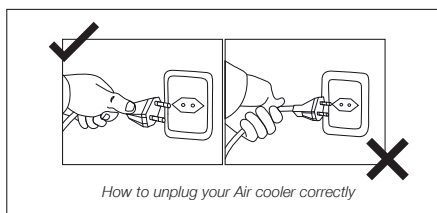
Thank you for your purchase of this Air Cooler. Please read these instructions carefully before use and keep them in a safe place, for future reference.



WARNING:
TO AVOID THE RISK OF ELECTRICAL SHOCK, ALWAYS MAKE SURE THE PRODUCT IS UNPLUGGED FROM THE ELECTRICAL OUTLET BEFORE ASSEMBLING, DISASSEMBLING, RELOCATING, SERVICING, OR CLEANING

For indoor use only.

- When the power cord is damaged, it must be replaced by the manufacturer, its service agent or a similarly qualified person in order to avoid a hazard.
- Only an authorised Service Agent may effect repairs to the Air Cooler.
- DO NOT connect the appliance to multiple extension cords or multiple outlets.
- Keep the power cord and product away from sharp edges and heated surfaces.
- Do not plug/unplug the product into/from the electrical outlet with a wet hand. Never insert fingers or any other object through the Air Cooler grilles. Never drop or insert objects into any opening of the product.
- Do not attempt to open any part of the motor housing, as there is a risk of electrical shock.
- Particular attention has to be given where children and vulnerable people are present.
- This appliance can be used by children aged from 8 years and above and persons with reduced physical, sensory or mental capabilities or lack of experience and knowledge if they have been given supervision or instruction concerning use of the appliance in a safe way and understand the hazards involved.
- Children should not play with the appliance. Cleaning and user maintenance should not be carried out by children without supervision
- This appliance is intended for household and indoor use only.



To remove from the socket pull on the plug, not the electrical cord



To avoid danger of electric shock, unplug from the outlet before cleaning,

If the electrical cord is damaged, stop using immediately and contact our customer care for a repair.

Customer Care

086 100 ALVA (2582)

WARRANTY

PLEASE RETAIN YOUR PROOF OF PURCHASE FOR WARRANTY CLAIMS.

ALVA warrants this appliance to be free of defects in material and quality for a period of 12 months from date of original purchase. This warranty covers the intended use of this appliance – within a domestic setting and not for commercial or industrial purposes. Any damage caused by willful abuse, tampering, modification or unauthorized repair will not be warranted.

Please retain all packaging material, as items returned without original packaging material may be subject to a withholding fee. Where this appliance is found to be defective, damaged, broken, or does not work correctly for the intended purpose, you must return the appliance to the retailer from where it was purchased.

The warranty will only be effected with valid proof of purchase. Failure to provide the proof of purchase will most likely result in the repair or service required being chargeable.

If you have any questions while setting up or using this Air Cooler, please visit www.alva.co.za or call 086 100 ALVA (2582) or e-mail info@stingray.co.za

GENERAL INFORMATION

Before using this Air Cooler, please read through this manual and make sure you understand everything. If you are not sure, call **086 100 ALVA (2582)** or visit www.alva.co.za for help.

Reading and understanding this manual should give you a good indication of what to expect from your Air Cooler.

Always keep your proof of purchase. Keep these instructions for future use.

If you lose this copy, you can obtain a new copy from your dealer or online at www.alva.co.za.

INDEX

PARTS LIST	3
INSTALLATION	4
REMOTE CONTROL AND CONTROL PANEL	5
OPERATION INSTRUCTIONS	5 - 7
CLEANING AND MAINTENANCE	7- 8
TROUBLESHOOTING	8
TECHNICAL DATA	9
DISPOSAL	9
STORAGE	10
AFTER SALES SERVICE	10

KEY

Notes marked with the following:



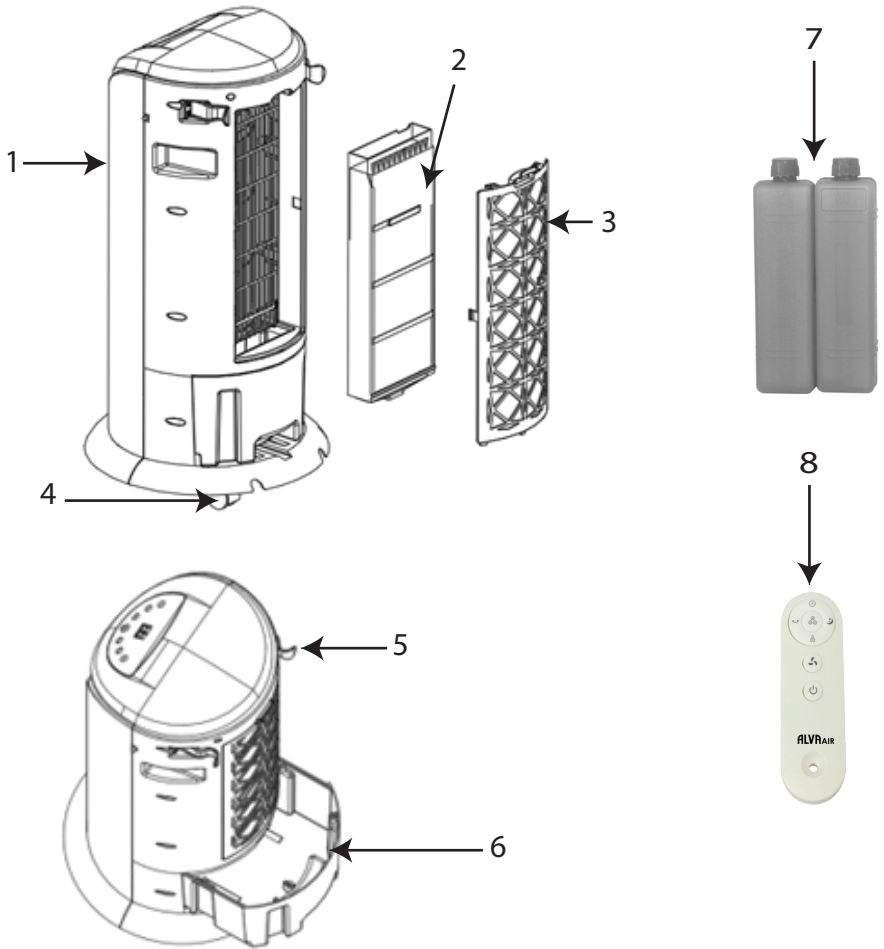
Contain important information.

Notes marked with the following:



Contain cautions and warnings.

PARTS LIST



1	Main body	x 1	5	Cord wrap hooks	x 2
2	Water absorbing filter	x 1	6	Water tank	x 1
3	Air Filter	x 1	7	Ice pack	x 2
4	Castor Wheels	x 4	8	Remote control	x 1

INSTALLATION

Open carton and remove the Air Cooler.

The appliance is purchased fully assembled, remove all packaging materials from inside box.

Place the appliance on a sturdy, flat surface and make sure there is enough space all around for sufficient ventilation, and free space of 30cm minimum around the appliance.

Check that all mentioned accessories have been supplied.

Clean the air cooler with a slightly damp cloth.

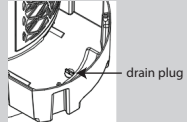
Filling Water Tank

Before filling water tank ensure the plug for draining water out of tank is secure.

To fill water tank, slide it out and pour in clean water to the max level shown on the water tank level indicator.

Slide water tank back into position.

Only use cold water in the water tank. Do not add any chemicals, oils or other additives.



Make sure the Air Cooler is unplugged from the mains before filling or refilling the water tank.



Do not spill or allow water to come in contact with the control panel.



Fill water tank before using Cool Air function.

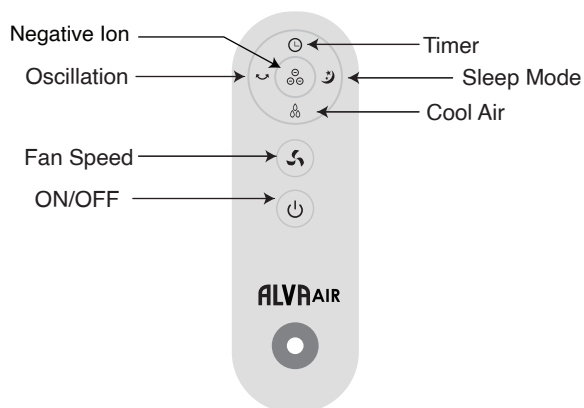
The unit can be used without water as a normal electric fan. For this, keep the Cool button in Off mode.

Ice Packs

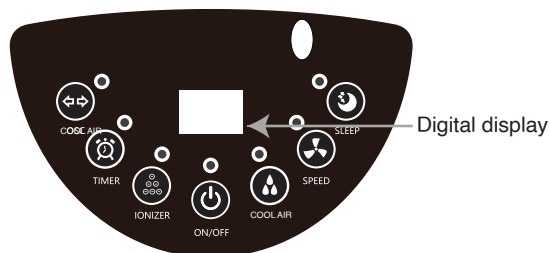
The ice packs should be frozen 3-4 hours before use. Slide open rear water tank and place frozen ice packs in the water of the tank. This will make the cold air blown from Air Cooler cooler.

REMOTE AND CONTROL PANEL

Remote control



Control Panel



- Power switch 
- Digital display 
- Fan Speed 
- Sleep mode 
- Cool Air 
- Oscillation 
- Timer 
- Negative ion 

OPERATION INSTRUCTIONS

In addition to cooling, the air cooler has three other functions; air humidification (mist only), ventilation (fan only) and Anion air purifying.

The unit is designed for indoor household use only. These functions below can be operated either from the Air Cooler control panel, or by using the remote control provided.

The remote control has a direct line of sight range of approximately 5m.

Power (ON/OFF) Button

Press Power Button to switch unit ON, operates a low speed (Level 1) and displays the room temperature.

Press Power Button again to switch unit OFF.

The display window shows the selected setting number for a few seconds and then defaults to the room temperature.

Speed Button

Each press cycles through fan speeds:

Level 1 = Low Speed

Level 2 = Medium Speed

Level 3 = High Speed

Sleep Button

The fan has variable preset speed sequences to simulate a breeze making it a relaxing/calming experience.

1st Sleep setting is medium natural breeze.

2nd Sleep setting is gentle natural breeze.

Timer

When the unit is operating you can set the timer to switch the Air Cooler off automatically after the set time period.

Press once to add 1 hour (up to 24 hours).

After 24 hours, pressing again cancels the timer.

Continue pressing to restart the cycle from 1 to 24 hours.

The Air Cooler works continuously if no time indicator light is displayed.

Cooling Function

Cooling function can be used separately, or together with fan.

Unit will start to circulate water by the pump from the water tank over the water absorbing filter and it drains back into the water tank. Air blowing through the air cooler will now be cooled by the circulating water.

For extra cooling, freeze the included ice packs completely, then place them one at a time in the water tank with water.

Note: The indicator light illuminates when cooling is active. If water runs low, cooling stops automatically and the indicator light flashes for 30 seconds and then switches off.

Oscillation Button

The Oscillation function disperses the air over a large area in the room. Press once to enable left-right and back, continuous swing motion (indicator light ON).



Fill the water tank with water before using the Cool Air function.

Ice Cubes or ice pack can be added to the water in the water tank to make cool air colder.

If the water level is below low mark or empty, the Cool Air function will not be activated until the water tank is filled.

The unit can be used without Cool Air function as a fan.

Press again to stop oscillation (indicator light OFF).
Up and down airflow direction adjusted manually.

Ionizer Function

Purifies the air by emitting ions into the room air, causing dust, pollen, pet dander, and other particles to clump together and drop out of the air.

To activate: Press the Ionizer button (indicator light on.)

To deactivate: Press the Ionizer button again (indicator light off.)

CLEANING AND MAINTENANCE

NOTE: Before cleaning the Air Cooler, switch it OFF and remove the plug from the wall socket.

Cleaning the body (1)

Clean the exterior of the appliance with a damp cloth or sponge. If necessary, the exterior can be cleaned using a damp cloth and a mild soapy solution.

- **Do not use aggressive or abrasive cleaning agents for cleaning the appliance.**
- Dry the exterior of the appliance.
- **Never submerge the appliance, cord or plug in the water or any other liquid.**

Cleaning the air filter (3)

In order to maintain the air cooler performance, we recommend cleaning the air filter regularly. The air filter could get clogged with dust and dirt.

1. Unclip the air filter at the rear of the appliance and remove it from the air cooler.
2. Clean the air filter with a mild detergent in lukewarm water (approx. 40°C). Then properly rinse the air filter with clean water and allow it to air dry. Do not place the air filter in the sun or apply heat to dry it.
3. Place the air filter back in the appliance. Check that it is fully dry, before using the air cooler again.
4. If air filter is not too clogged with dust you can clean it by means of a vacuum cleaner with a soft brush nozzle.

Cleaning the water absorbing filter (2)

When you have removed the air filter, you can also remove the water absorbing filter. Remove the water absorbing filter from the holder, clean it with clean water and a soft brush and then carefully place it back in the holder. Do not use detergents as they can affect the water absorbing filter.

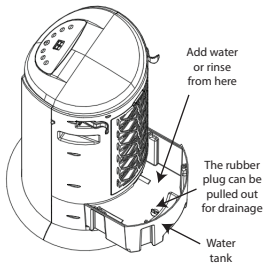
Be careful not to damage the water absorbing filter when cleaning.



Before cleaning the Air Cooler or filling the water tank, always remove the plug from the power socket to prevent injury or electrical shock.

Cleaning the water tank (6)

Water tank cannot be removed completely, slide it out until it stops. Drain remaining water from the tank by removing rubber plug and clean the tank with a mild soapy solution and warm water. Properly rinse with clean water and dry.



TROUBLESHOOTING

Faults	Reasons	Solutions
Fan not working	<ul style="list-style-type: none">• No power• No operation• Unit is damaged	<ul style="list-style-type: none">• Check mains power supply is on.• Send to repair centre
The unit cannot be switched off	<ul style="list-style-type: none">• "ON/OFF" button is not pressed.• Safety switch is released• Spare parts are damaged	<ul style="list-style-type: none">• Press the "ON/OFF" button to turn the unit off• Send into repair centre.
The unit makes an abnormal noise	<ul style="list-style-type: none">• Dust caught in Air Cooler• The motor is out of order	<ul style="list-style-type: none">• Remove the objects• Send into repair centre.
Lack of humidity	<ul style="list-style-type: none">• Low water level or insufficient water• Water pipe loose• The pump is not working	<ul style="list-style-type: none">• Refill water tank• Reconnect the water pipe• Send into repair centre.
No Oscillation	<ul style="list-style-type: none">• The motor is damaged	<ul style="list-style-type: none">• Send into repair centre.
Insufficient Cooling	<ul style="list-style-type: none">• Rear Filter blocked by dust• Not enough water• Cool Air button not pressed	<ul style="list-style-type: none">• Wash the Dust filter• Add water to correct level• Press the Cool Air button

Please clean the filtering system frequently to maintain your unit in good working order. Never immerse the unit, power cord or plug into water.

Do not attempt to repair this unit yourself; only approved technicians are authorised to repair it.



Should you experience problems with this Air Cooler, carry out the necessary checks as per the Trouble Shooting Guide.

If you are still unable to correct the problem with the information in this guide, contact your nearest dealer or ALVA: 086 100 (ALVA) (2582) or e-mail info@stingray.co.za

TECHNICAL DATA

Item number	ACS107
Description	8L EVAPORATIVE AIR COOLER WITH REMOTE CONTROL
Voltage (V) Hz	220-240V ~ 50Hz
Electric power	60W
Dimensions	360 x 360 x 700mm
Weight	5.39kg
Water capacity	8Litres
Any modification to the Air Cooler may cause injury or property damage.	
Any modification to the Air Cooler will invalidate the warranty on this appliance.	

DISPOSAL

Used electric household devices

1. If you do not want to use your electrical appliance any longer, return it free of charge to a recycling depot for used electric appliances
2. Used electric devices do not belong in the household garbage (see symbol)

Further disposal instructions

1. Return the electrical appliance in such a condition that its later re-use or recycling is not adversely affected. Batteries must be removed in advance and the destruction of parts which contain fluids must be avoided.
2. Electrical appliances can contain harmful substances. Improper handling or damage to the appliance can lead to health problems or water or ground contamination, when the appliance is recycled later.



STORAGE

Unplug the unit from the power outlet and drain all water from the tank.

Wrap the power cord around the storage hooks (5)

Cover the Air Cooler if it is not being used for a long time.

The unit should be stored in a dry place, inaccessible to children.

AFTER SALES SERVICE

MANUFACTURED FOR AND DISTRIBUTED BY ALVA AIR

A division of Stingray Accessory Manufacturers

(Pty) Ltd.

P.O. Box 30014, Tokai, 7966

Tel: 021 442 1540

E-mail: info@stingray.co.za

www.alva.co.za

 www.facebook.com/AlvaGas

TOLL FREE NUMBER

086 100 ALVA (2582)



*Always ensure that the Cooler
is unplugged when not in use.*