

ALVA_{AIR}

8L EVAPORATIVE AIR COOLER

ACS105



- PLEASE READ THIS MANUAL CAREFULLY BEFORE USE AND ALWAYS OPERATE THIS PRODUCT ACCORDING TO THE INSTRUCTIONS
- RETAIN THIS MANUAL FOR FUTURE REFERENCE
- IT IS ILLEGAL AND DANGEROUS TO CHANGE OR MODIFY ANY PART OF THIS APPLIANCE

Manufactured for
and Distributed by:

ALVA_{AIR}

A division of Stingray Accessory Manufacturers (Pty) Ltd | P.O. Box 30014, Tokai, 7966
+27 21 442 1540 | info@stingray.co.za | www.alva.co.za
TOLL FREE NUMBER: 086 100 ALVA (2582)

IMPORTANT SAFETY INFORMATION

- Please read these instructions carefully before using your Air Cooler. The operator must understand all safety requirements as detailed in this manual before using the unit.
- The manufacturer's warranty may be voided by incorrect use of this product. If you have any queries regarding these instructions, contact your local dealer for clarification before using your Air Cooler.
- Always remove unit from all packaging materials prior to use.
- Failure to follow the manual's instructions could result in damage or serious injury.
- When using electrical appliances, in order to reduce the risk of fire, electric shock, and/or injury, these basic safety precautions should always be followed.
- This product is intended for general domestic indoor use only to cool rooms.
- Do not use the product for any other purpose.
- Do not leave the product unattended while it is in use, especially when children are present. Always unplug the product from the electrical outlet when it is not in use.

Make sure your electricity supply is 220-240V~50Hz
Use the appliance only as described in the manual. Other uses are not recommended as it may cause fire or electric shock.

Do not use the unit in areas where extreme temperatures occur.
Do not expose the unit to direct sunlight.
Do not fill the water tank above the "Max" indicator level.
To avoid spillage, do not move the air cooler quickly if the water tank still contains water.
Do not place the unit near any explosives, heated or hot surfaces.

Hold the plug to disconnect from the power socket.
Do not pull the power cord only.
Do not use the "Cooler" function in an enclosed area with poor ventilation for extended periods to avoid high humidity.

The unit must be operated on a flat, sturdy hard surface/floor.
Close supervision is required when the appliance is used by or near children.

Change the water regularly to keep the water clean.

Thank you for your purchase of this Air Cooler. Please read these instructions carefully before use and keep them in a safe place, for future reference.



WARNING:
TO AVOID THE RISK OF ELECTRICAL SHOCK, ALWAYS MAKE SURE THE PRODUCT IS UNPLUGGED FROM THE ELECTRICAL OUTLET BEFORE ASSEMBLING, DISASSEMBLING, RELOCATING, SERVICING, OR CLEANING IT.

For indoor use only.

- When the power cord is damaged, it must be replaced by the manufacturer, its service agent or a similarly qualified person in order to avoid a hazard.
- Only an authorised Service Agent may effect repairs to the Air Cooler.
- DO NOT connect the appliance to multiple extension cords or multiple outlets.
- Keep the power cord and product away from sharp edges and heated surfaces.
- Do not plug/unplug the product into/from the electrical outlet with a wet hand. Never insert fingers or any other object through the Air Cooler grilles. Never drop or insert objects into any opening of the product.
- Do not attempt to open any part of the motor housing, as there is a risk of electrical shock.
- Particular attention has to be paid where children and vulnerable people are present.
- This appliance can be used by children aged from 8 years and above and persons with reduced physical, sensory or mental capabilities or lack of experience and knowledge if they have been given supervision or instruction concerning use of the appliance in a safe way and understand the hazards involved.
- This appliance is intended for household and indoor use only.

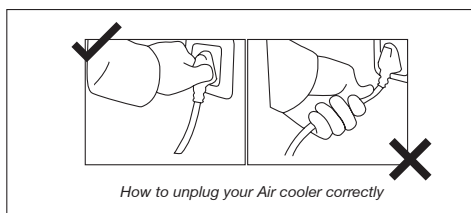


To avoid danger of electric shock, unplug from the outlet before cleaning,

If the electrical cord is damaged, stop using immediately and contact our customer care for a repair.

Customer Care

086 100 ALVA (2582)



To remove from the socket pull on the plug, not the electrical cord

WARRANTY

PLEASE RETAIN YOUR PROOF OF PURCHASE FOR WARRANTY CLAIMS.

ALVA warrants this appliance to be free of defects in material and quality for a period of 12 months from date of original purchase. This warranty covers the intended use of this appliance – within a domestic setting and not for commercial or industrial purposes. Any damage caused by willful abuse, tampering, modification or unauthorized repair will not be warranted.

Please retain all packaging material, as items returned without original packaging material may be subject to a withholding fee. Where this appliance is found to be defective, damaged, broken, or does not work correctly for the intended purpose, you must return the appliance to the retailer from where it was purchased.

The warranty will only be effected with valid proof of purchase. Failure to provide the proof of purchase will most likely result in the repair or service required being chargeable.

If you have any questions while setting up or using this Air Cooler, please visit www.alva.co.za or call 086 100 ALVA (2582) or e-mail info@stingray.co.za

GENERAL INFORMATION

Before using this Air Cooler, please read through this manual and make sure you understand everything. If you are not sure, call **086 100 ALVA (2582)** or visit www.alva.co.za for help.

Reading and understanding this manual should give you a good indication of what to expect from your Air Cooler.

Always keep your proof of purchase. Keep these instructions for future use.

If you lose this copy, you can obtain a new copy from your dealer or online at www.alva.co.za.

INDEX

PARTS LIST	3
INSTALLATION	4
CONTROL PANEL	5
OPERATING INSTRUCTIONS	6 - 7
CLEANING AND MAINTENANCE	7 - 8
STORAGE	8
TROUBLESHOOTING	9
TECHNICAL DATA	9
AFTER SALES SERVICE	10

KEY

Notes marked with the following:



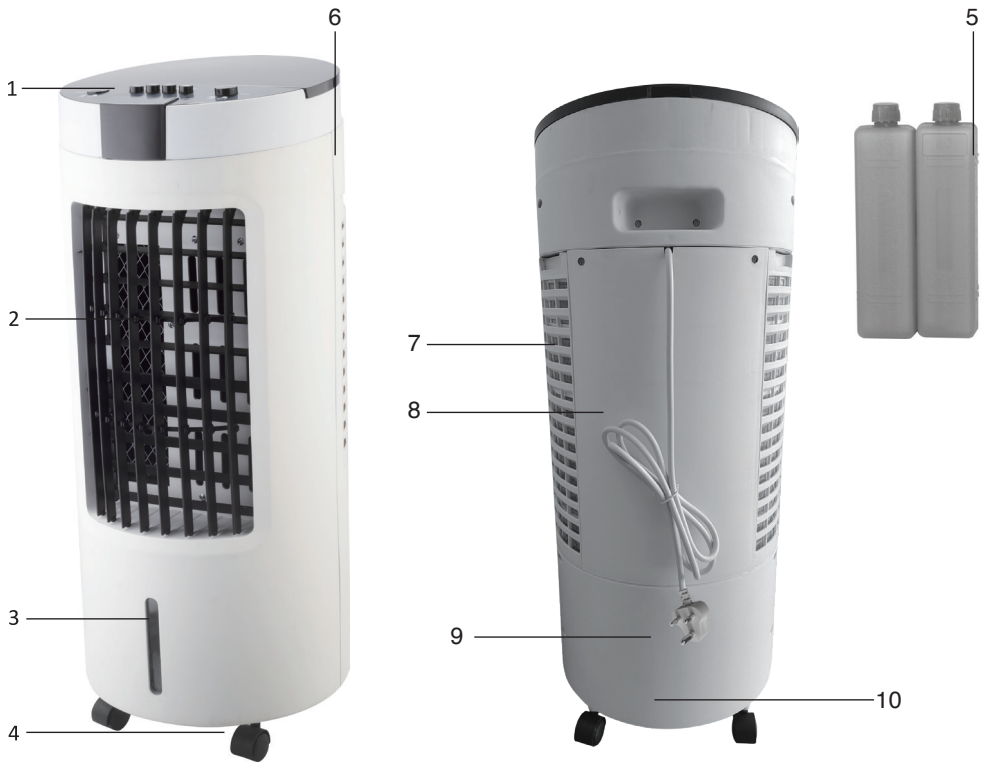
Contain important information.

Notes marked with the following:



Contain cautions and warnings.

PARTS LIST



1	Operating panel	x 1	6	Handle	x 1
2	Louvre grille	x 1	7	Air filter	x 1
3	Water level indicator	x 1	8	Water absorbing filter	x 1
4	Castor wheels	x 4	9	Water Tank	x 1
5	Ice pack	x 2	10	Water tank stopper	x 1

INSTALLATION

Open carton and remove the Air Cooler.

Make sure there is enough space to place all parts before starting assembly.

Castors are supplied loose, and need to be fitted. Lay air cooler on its side and insert 4x castors into the holes on the underside. Press into place.

The 2 castors with brake levers must be inserted to the rear wheels of air cooler.

Place the appliance on a sturdy, flat surface and make sure there is enough space all around for sufficient ventilation and free space of 30cm minimum around the appliance.

Check that all mentioned accessories have been supplied.

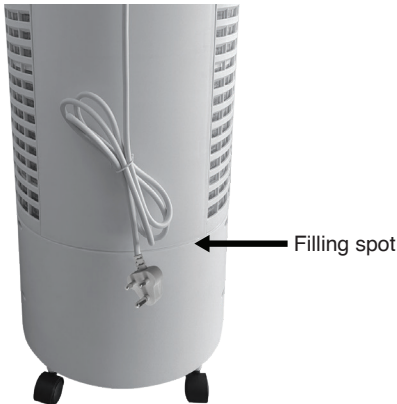
Clean the air cooler with a slightly damp cloth.

Before filling water tank ensure the cap on the water drainage outlet of the appliance is tight.

To fill the water tank remove air filter and water absorbing filter at the rear of the appliance. Pour clean water through opening directly into the water tank to the max level shown on the Water Tank Level Indicator.



Do not spill or allow water to come in contact with the control panel.



Place water absorbing filter and air filter back into position.

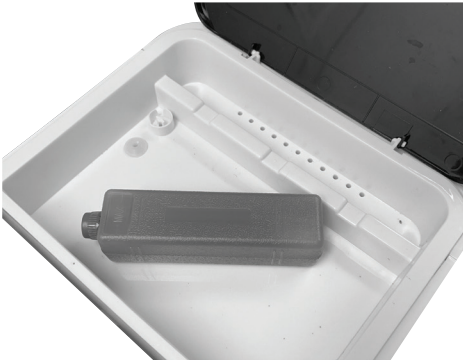
Fill water tank before using cool air function.

The unit can be used without water as a normal electric fan. For this keep the Cool button in Off mode.

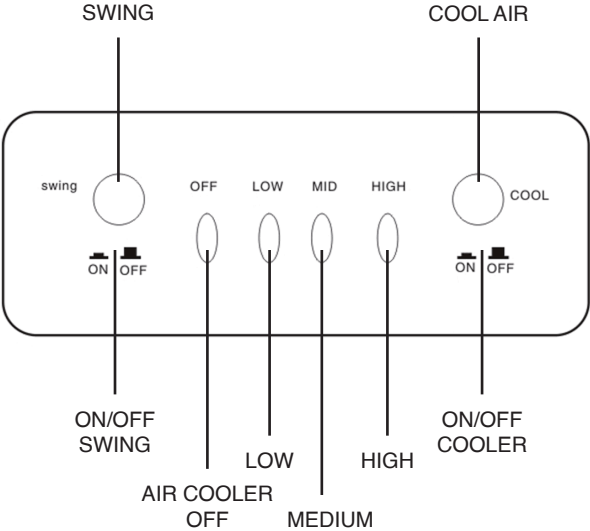
Ice Packs

Unscrew caps, fill with water to max indicated level, screw caps on securely and shake to dissolve powder solution. Leave Ice Packs sealed, do not reopen again.

The ice packs should be frozen 3-4 hours before use. Open top lid behind control panel and place frozen Ice Pack in top reservoir.



CONTROL PANEL



OPERATING INSTRUCTIONS

In addition to cooling, the air cooler has two other functions; air humidification and ventilation.

The unit is designed for indoor household use only. These functions below can be operated from the provided Air Cooler control panel.

Lift the front levers from the bottom to open them before switching on the appliance and angle for desired air direction. After use the levers can be closed.

VENTILATION

The ventilation air flow can be set to different speeds.

1. Switch on the appliance using the ON/OFF button.
2. The indicator light for the lowest fan speed lights up.
3. Change the fan speed with each press on the SPEED button: Low, Medium or High.

COOLING

The appliance is able to cool the air flow when the water tank is filled with cold water. Create additional cool air by placing a frozen ice pack in the water in the water tank at the top of the machine.

Two ice packs are supplied, so you can use them alternately and the appliance is able to cool continuously.

Caution: only use this mode when the water tank is filled with fresh cold water.

1. Switch on the appliance using the ON/OFF button.
2. Press the Cool Button.
3. Change the fan speed with each press on the Speed Button: Low, Medium or High.

Note:

- Always use fresh cold water.
- Make sure the water in the water tank does not fall below the minimum level (MIN) when using the cooling function.

Humidification

The appliance is able to humidify the indoor air thus creating a healthy living environment. For a healthy indoor living climate, the air humidity should be between 40% and 60%.

Caution: This function only applies when the water tank is filled with fresh cold water.

- Switch on the appliance using the ON/OFF button
- The speed of the ventilation cannot be changed when using this mode and is always at the lowest speed.



Fill the water tank with water before using the Cool Air function.

If the water level is below low mark or empty, the Cool Air function will not be activated until the water tank is filled.

The unit can be used without Cool Air function as a fan.

Ice Cubes or ice pack can be put into the water tank to improve cool air function.

Swing Function

The Swing function disperses the air over a large area in the room.

1. Switch ON the appliance to the required mode.
2. Press the Swing Button and the fins inside the air cooler move to the left and right continuously.
3. The vertical air direction can be adjusted manually.

Cool Air Button

Unit will start to circulate water by the pump from the water tank over the curtain and it drains back into the water tank.

Air blowing through the fan will now be cooled by the circulating water.

CLEANING AND MAINTENANCE

Before cleaning the air cooler, switch it OFF and remove the plug from the wall socket.

Cleaning the exterior

Clean the exterior of the appliance with a damp cloth or sponge. If necessary, the exterior can be cleaned using a damp cloth and mild soapy solution.

- **Do not use aggressive or abrasive cleaning agents for cleaning the appliance.**
- Dry the exterior of the appliance.
- **Never submerge the appliance, cord or plug in water or any other liquid.**

Cleaning the air filter

In order to maintain the air cooler performance, we recommend cleaning the air filter regularly. The air filter could get clogged with dust and dirt.

1. Unscrew the air filter at the rear of the appliance and remove it from the air cooler.
2. Clean the air filter with a mild detergent in lukewarm water (approx. 40°C). Then properly rinse the air filter with clean water and allow it to air dry. Do not place the air filter in the sun or applying heat to dry it.
3. Place the air filter back in the appliance. Check that it is fully dry, before using the air cooler again.

Cleaning the ventilation grilles

In order to allow the air cooler to function as efficiently as possible, you can clean the ventilation grilles by means of a vacuum cleaner with a soft brush nozzle.



Before cleaning the Air Cooler or filling the water tank, always remove the plug from the power socket to prevent injury or electrical shock.

Cleaning the water absorbing filter

When you have removed the air filter, you can also remove the water absorbing filter. Remove the water absorbing filter from the holder, clean it with clean water and a soft brush and then carefully place it back in the holder. Do not use detergents as they can affect the water absorbing filter.

Cleaning the water tank

Water tank cannot be removed. Discard any water that is still present in the water tank and clean the tank with a mild soapy solution and warm water.

Properly rinse with clean water and dry.

The water tank can be drained by removing the Water Tank Stopper(9)

STORAGE

Unplug the unit from the power outlet and drain all water from the tank.

Cover the Air Cooler if it is not being used for a long time.

The unit should be stored in a dry place, inaccessible to children.



Always ensure that the Cooler is unplugged when not in use.

TROUBLESHOOTING

Faults	Reasons	Solutions
Fan not working	<ul style="list-style-type: none"> No power No operation Unit is damaged 	<ul style="list-style-type: none"> Check mains power supply is on. Send to repair centre
The unit cannot be switched off	<ul style="list-style-type: none"> "ON/OFF" button is not pressed. Safety switch is released Spare parts are damaged 	<ul style="list-style-type: none"> Press the "ON/OFF" button to turn the unit off Send into repair centre.
The unit makes an abnormal noise	<ul style="list-style-type: none"> Dust caught in Air Cooler The motor is out of order 	<ul style="list-style-type: none"> Remove the objects Send into repair centre.
Lack of humidity	<ul style="list-style-type: none"> Low water level or insufficient water Water pipe loose The pump is not working 	<ul style="list-style-type: none"> Refill water tank Reconnect the water pipe Send into repair centre.
No Oscillation	<ul style="list-style-type: none"> The motor is damaged 	<ul style="list-style-type: none"> Send into repair centre.
Insufficient Cooling	<ul style="list-style-type: none"> Rear Filter blocked by dust Not enough water Cool Air button not pressed 	<ul style="list-style-type: none"> Wash the Dust filter Add water to correct level Press the Cool Air button

Please clean the filtering system frequently to maintain your unit in good working order. Never immerse the unit, power cord or plug into water.

Do not attempt to repair this unit yourself; only approved technicians are authorised to repair it.

TECHNICAL DATA

Item number	ACS105
Description	8L EVAPORATIVE AIR COOLER
Voltage (V) Hz	220-240V ~ 50-60Hz
Electric power	80W
Dimensions	285 x 285 x 650mm
Weight	3.2kg
Water capacity	8 Litres
Any modification to the Air Cooler may cause injury or property damage.	
Any modification to the Air Cooler will invalidate the warranty on this appliance.	



Should you experience problems with this Air Cooler, carry out the necessary checks as per the Trouble Shooting Guide.

If you are still unable to correct the problem with the information in this guide, contact your nearest dealer or ALVA: 086 100 (ALVA) (2582) or e-mail info@stingray.co.za

AFTER SALES SERVICE

MANUFACTURED FOR AND DISTRIBUTED BY ALVA AIR

A division of Stingray Accessory Manufacturers

(Pty) Ltd.

P.O. Box 30014, Tokai, 7966

Tel: 021 442 1540

E-mail: info@stingray.co.za

www.alva.co.za

 www.facebook.com/AlvaGas

TOLL FREE NUMBER

086 100 ALVA (2582)