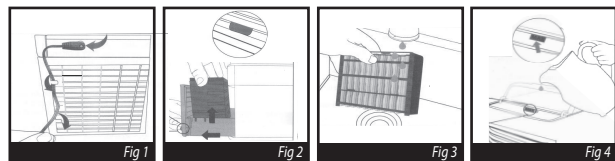


### USEFUL TIPS:

- Place Cool Cube on a raised surface such as a table, desk or counter top. This is the best way to cool your personal space fast.
- Let the filter absorb water for at least 3 minutes after filling the tank before use.
- Try to stay nearby the cool cube. You'll feel the most benefit when sitting directly in front of it.
- The Cool Cube will run for approximately 12 hours on a single tank of water on low fan speed. Even if the water tank is empty, the filter is still damp and the cooler will still cool. Do not move the cool cube while there is water inside.

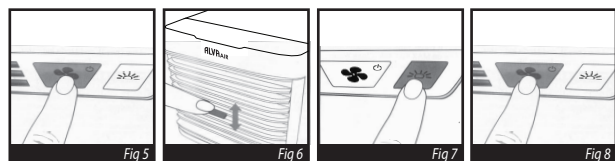
### SETUP:



1. Set the Cool Cube on a flat surface such as a table or desk (see Fig 1). Attach power adapter to power adapter Port, and plug power adapter into wall outlet. *Note: Please remove the foam in front of the filter before use.*
2. Use the filter draw tab to pull out the filter drawer and remove filter. (see Fig 2)
3. For best results, lightly pre-soak under cold running water. For even more cooling power, place the wet filter in the freezer until frozen. Place back in drawer when done. (see Fig 3).
4. Open water tank door and fill to Max fill indicator. Close water tank door when done. (see Fig 4). We recommend using a jug or measuring cup. DO NOT OVERFILL.

**PLEASE NOTE:** Use built-in cord guide along the back to keep cord away from fan.

### USAGE:



1. Press the button to turn the Cool Cube one - it will default to high speed mode. (see Fig 5).
  - 1<sup>st</sup> press: Power on, High
  - 2<sup>nd</sup> press: Medium
  - 3<sup>rd</sup> press: Low
  - 4<sup>th</sup> press: Power off

**PLEASE NOTE:** Cool Cube will run up to 8 hours on high, 10 hours on medium, 12 hours on low.

2. Use the Air Direction Tab to adjust airflow up/down to your preference. (see Fig 6).

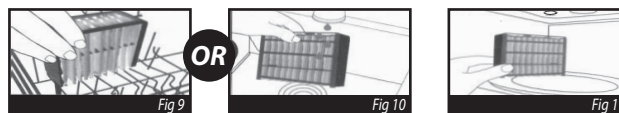
### USAGE (CONT.):

3. Choose different colour lights by pressing button. (see Fig 7).
  - 1<sup>st</sup> press to change: Press the button to choose the different light colours according to the different scenes and time.
  - 2<sup>nd</sup> press: Light off.
4. To power off, press the button until fan turns off (one press after low speed), and mode indicator lights are no longer lit. (see Fig 8).

**IMPORTANT:** If you do not plan to use the Cool Cube for an extended period of time, it is recommended that you empty the water tank and let unit/filter dry before storing. This will avoid mould and unpleasant smells, and prolong life of Cool Cube and filter.

### MAINTENANCE:

We recommend weekly cleaning of your Cool Cube and filter to keep it in best working condition and replacing the filter every 3-6 months.



**Dishwasher:** Place filter in the top-rack of your dishwasher and run cycle normally. Remove and let air dry. (see Fig 9).

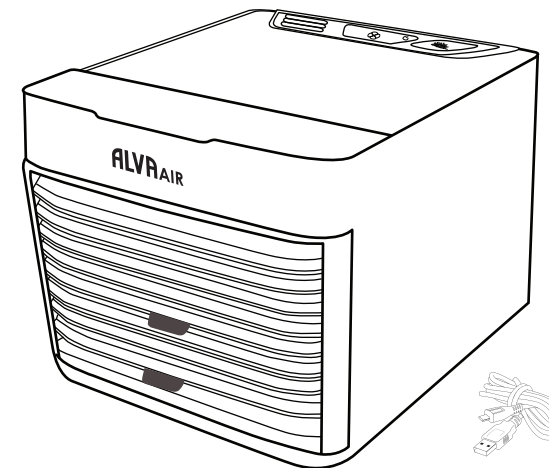
**Hand Wash:** Hand wash gently with warm water and soap. Shake out excess water and let air dry. (see Fig 10).

**Microwave:** Between washes, sanitize your filter by placing in microwave on high for 30 seconds at a time, up to 2 minutes. Let stand until cool. (see Fig 11).

**IMPORTANT:** If you see mould on the filter or notice a musty smell, stop and clean the filter before further use. Fully submerge the filter in a pot or bowl filled with equal parts clean water and white vinegar - allow to soak for 45-60 minutes. Rinse with warm water, wring out and let dry.

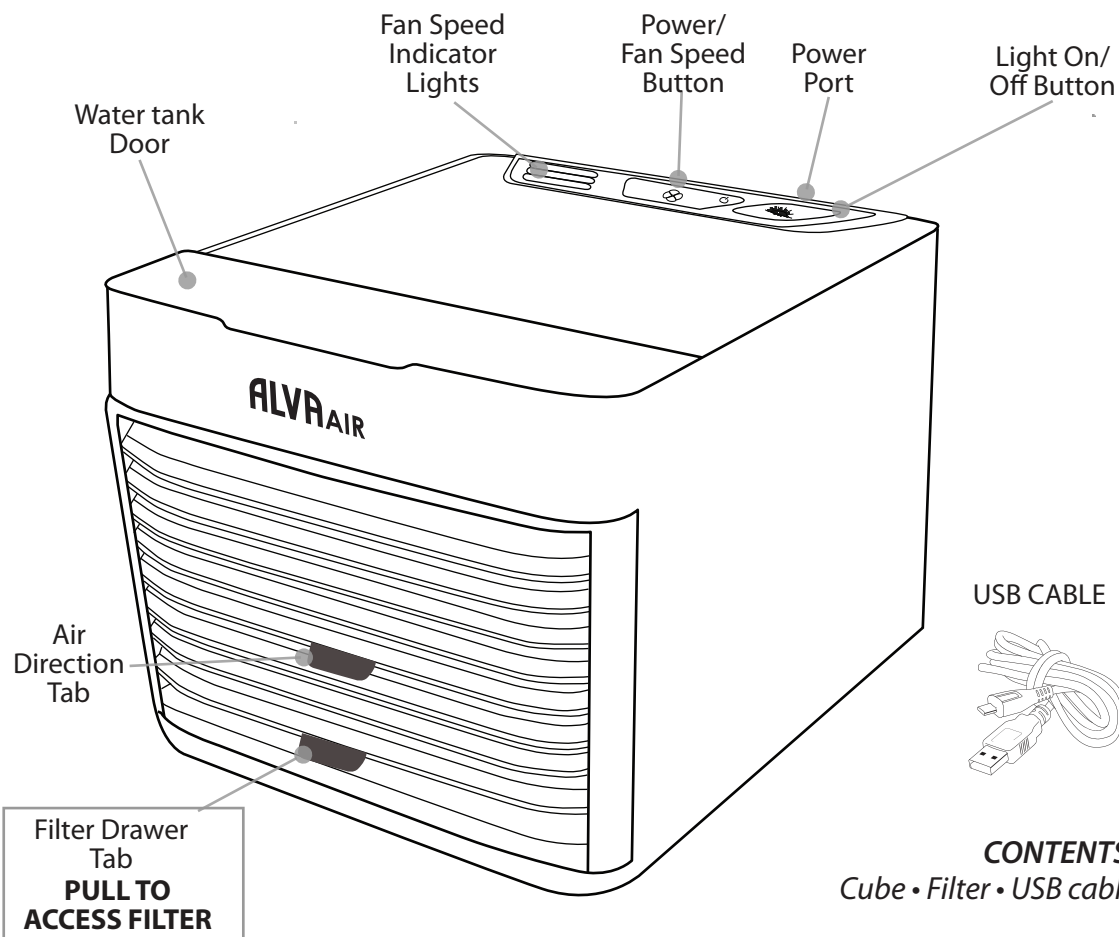
### Unit Cleaning

- To prepare for cleaning, run Cool Cube until all water has emptied from the water tank, or hold Cool Cube over a sink and carefully drain out to avoid splashing or spilling. (see Fig 12).
- Remove filter tray from Cool Cube. Using warm, soapy water, wipe filter tray and grill, then rinse off until clean. Let air dry. (see Fig 13).
- If you notice water tank is dirty, use a small bendable brush (i.e. toothbrush, bottle brush, etc) and carefully clean the inside of the tank. Rinse with warm water.



### WARNINGS:

- Do not carry Cool Cube when filled with water. Some water may remain in the unit even if tank is empty.
- Use only clean water. If needed, use distilled water.
- Please read and follow regular maintenance as recommended in "Maintenance" section of this guide.
- Cool Cube works best in non-polluted areas. Large dust/dirt particles may reduce lifetime of unit.
- We recommend to only use in dry locations. If using in a moist area or environment, take care not to get water on external areas of the product.
- If a leak or spill occurs on the surface of device, unplug Cool Cube and let it dry for 24 hours. Then, use as normal.
- Do not place in direct sunlight for extended periods of time.
- Only use the original power cord supplied in package.
- Do not touch the power supply or power cord with wet hands.
- Unplug Cool Cube when cleaning, removing/replacing filter, or moving the device.
- For best results, place Cool Cube on a higher surface like a table or countertop.
- Do not place near a heater or any electrical equipment.
- Do not place the device in passageways or high traffic areas where there is a possibility of tripping or knocking it over.
- Do not allow any foreign objects inside Cool Cube.
- Do not place items on top of Cool Cube.
- Do not block the front and back grills of the device.
- Do not turn the device upside down.
- Do not submerge the Cool Cube under water or other liquids.
- Do not place Cool Cube near open flames or fire sources.
- People with limited physical, visual or mental abilities or lacking proper experience and/or knowledge should never use the device without supervision of those responsible for their safety or those capable of assistance in using the device.
- The device can be switched off completely only when disconnected from the power supply.
- The manufacturer does not bear any responsibility for any damage from failure to comply with this product guide.
- A replaceable water filter is designed specifically for this product.



# ALVAIR

Life's Cool

## ACS102

### COOL CUBE

PERSONAL EVAPORATIVE AIR COOLER

#### NOTES:

Information on the disposal for Waste Electrical & Electrical Equipment (WEEE) This symbol on the product and accompanying documents means that used electrical and electronic products should not be mixed with general household waste.

#### FOR HOUSEHOLD USE ONLY



#### CONTENTS:

Cube • Filter • USB cable

- Do not submerge the cooler under water or other liquids.
- Do not place cooler near open flames or fire sources.
- People with limited physical, visual or mental abilities or lacking proper experience and/or knowledge should never use the device without supervision of those responsible for their safety or those capable of assistance in using the device.
- The device can be switched off completely only when disconnected from the power supply.
- The manufacturer does not bear any responsibility for any damage from failure to comply with this product guide.
- A replaceable water filter is designed specifically for this product. If your cartridge has been broken or damaged, you can purchase a replacement.

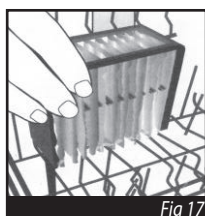
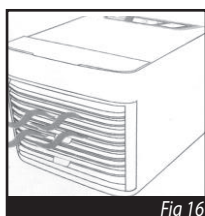
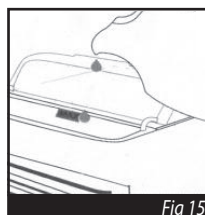
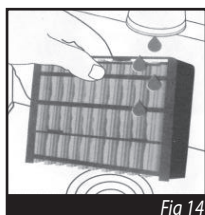
#### CONTACT DETAILS:

Manufactured for and Distributed by: **ALVAIR** Life's Cool  
 A division of Stingray Accessory Manufacturers (Pty) Ltd  
 P.O. Box 30014, Tokai, 7966  
 +27 21 442 1540 | info@stingray.co.za | www.alva.co.za  
 TOLL FREE NUMBER: 086 100 ALVA (2582)

www.facebook.com / Alvaelectricsa

This is an ALVA product. This product is not available as a private label variant.

#### FOR BEST RESULTS



**1. PRE-SOAK FILTER:** Place your filter under cold running water until wet. (see Fig 14).

*TIP:* For greater cooling, place a wet filter in the freezer until frozen.

**2. FILL WITH WATER JUG:** Place on flat surface and fill tank from a water jug or cup. (see Fig 15).

**3. SET AIR FLOW:** Point towards you and adjust the grill to direct air flow. (see Fig 16).

**4. FILTER CLEANING:** We recommend regular cleaning of your filter. See Product Guides or Care and Cleaning label on the filter for instructions. (see Fig 17).

*PLEASE NOTE:* You may notice some condensation forming on the front grill. This is normal.